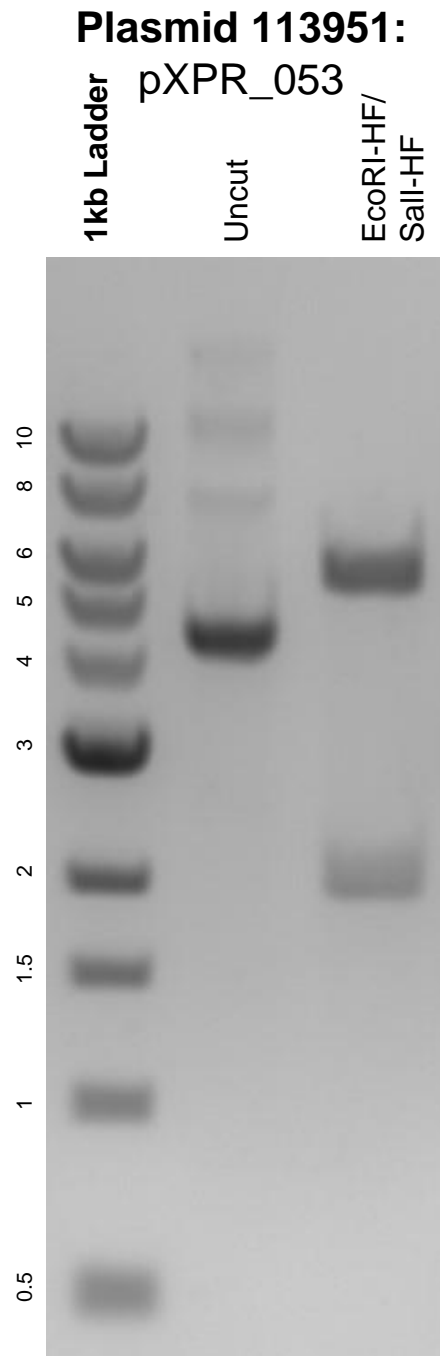


This gel depicts the NEB 1kb ladder and a digestion of the plasmid pXPR_053 with the following enzymes: EcoRI-HF and Sall-HF.



DNA digested with EcoRI-HF and Sall-HF double digest for **2 hours**.

Gel: 0.8% agarose stained with 5 uL of ethidium bromide.

Ran for 1.5 hours at 100 volts.