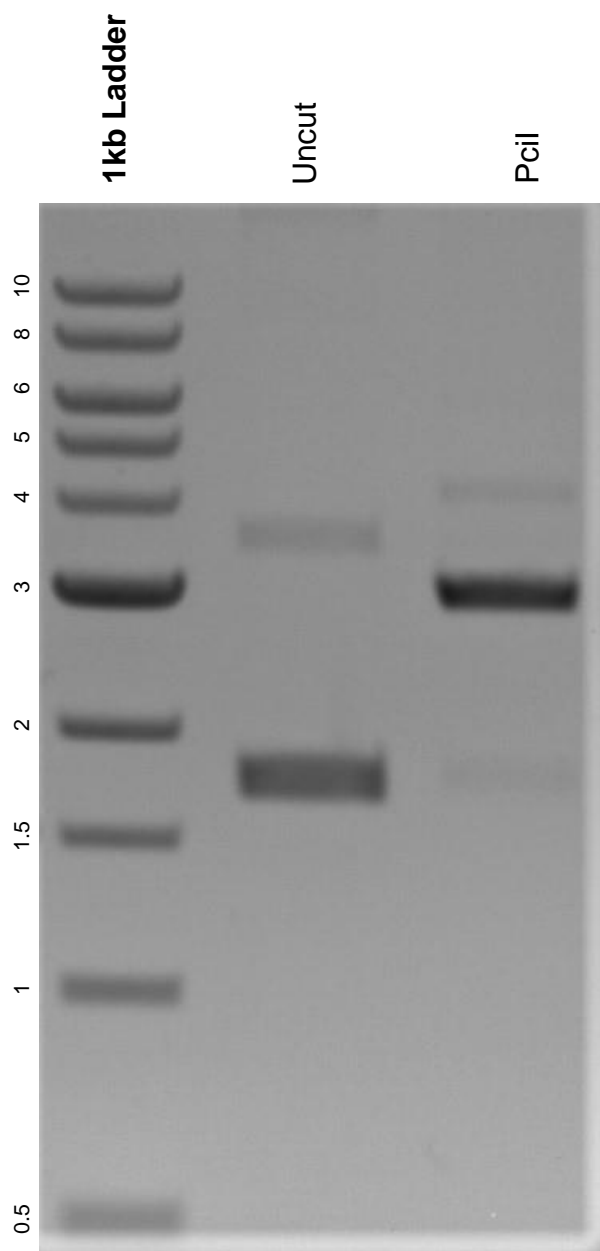


This gel depicts the NEB 1kb ladder and a digestion of the plasmid pENTR-R4R3-stop with the following enzymes: PciI.

Plasmid 113745:
pENTR-R4R3-stop



DNA digested with PciI single digest for **2 hours**.

Gel: 0.8% agarose stained with 6 uL of ethidium bromide.

Ran for 1.5 hours at 100 volts.