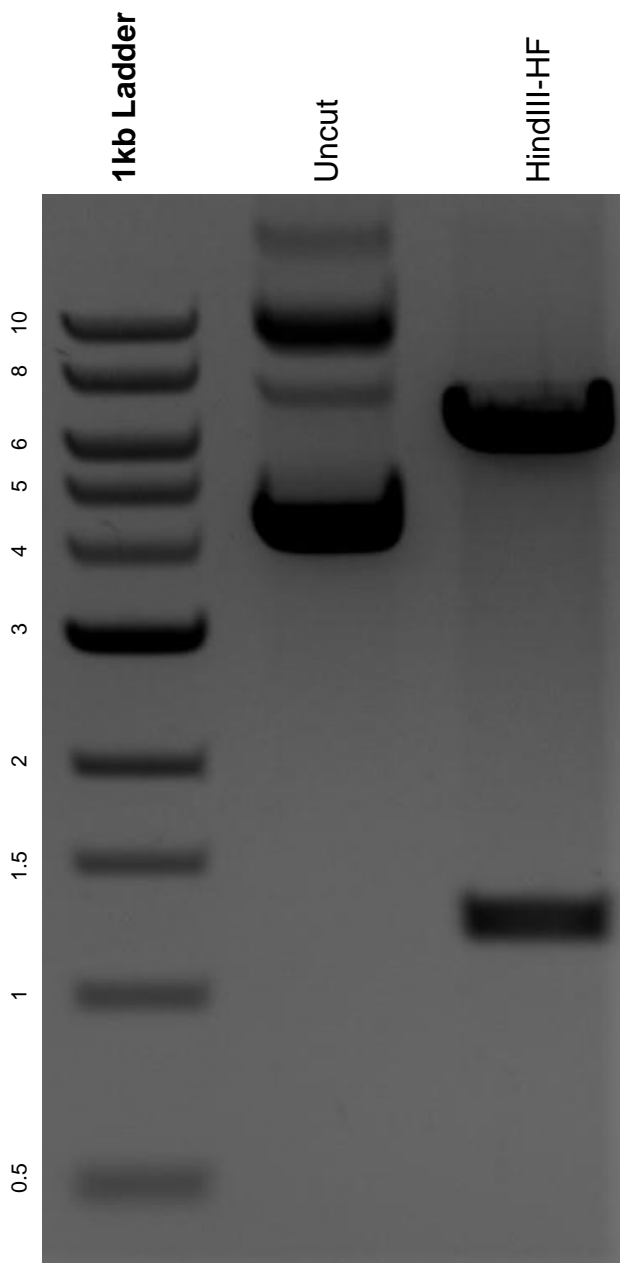


This gel depicts the NEB 1kb ladder and a digestion of the plasmid pAB(EXPR-PYL-HDAC3-NEO) with the following enzymes: HindIII-HF.

Plasmid 114394:
pAB(EXPR-PYL-HDAC3-NEO)



DNA digested with HindIII-HF single digest for **2 hours**.
Gel: 0.8% agarose stained with 6 uL of ethidium bromide.
Ran for 1.5 hours at 100 volts.