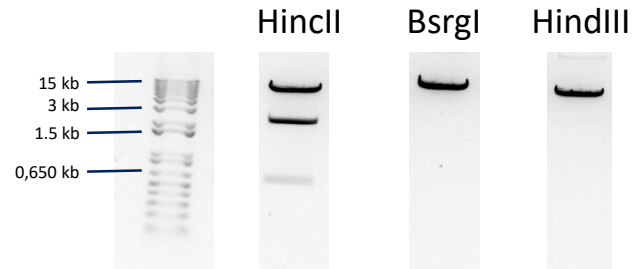
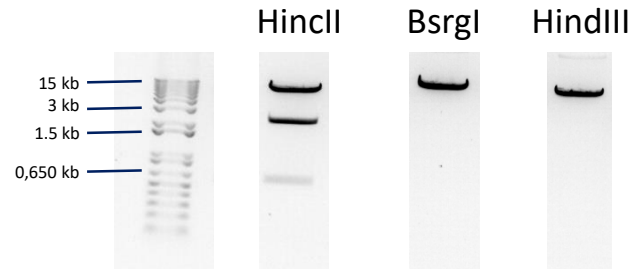


# pZ M2rtTA\_CAGG TetON-Sox10

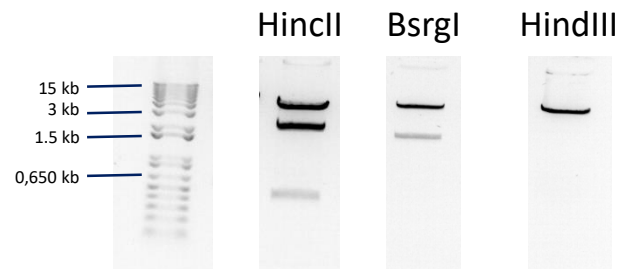


Katrien Neyrinck,  
Stem Cell Institute Leuven,  
KU Leuven

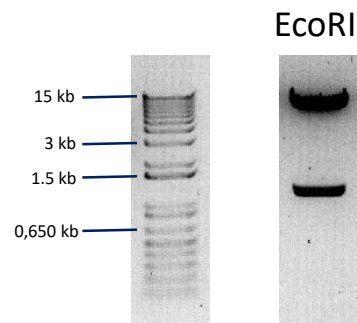
### SOX10 AAVS1 (map “pZ M2rtTA\_CAGG TetON-Sox10”)



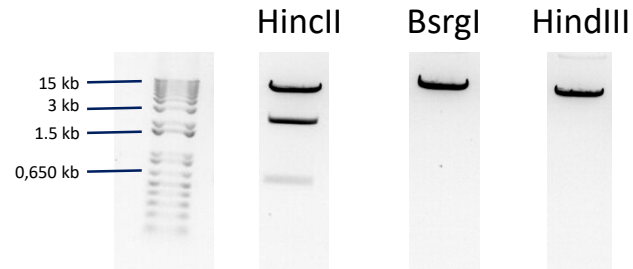
### SOX10-GFP AAVS1 (map “pZ M2rtTA\_CAGG TetON-Sox10 with GFP”)



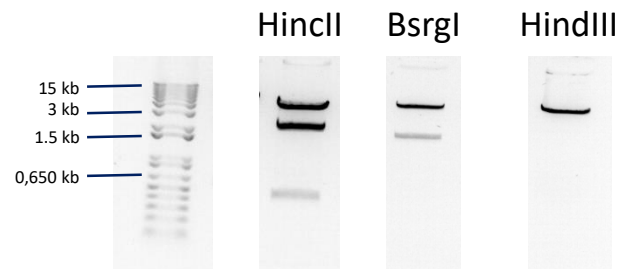
### FUW-SOX10 viral vector (map “Sox10 in TetO-FUW”)



### SOX10 AAVS1 (map “pZ M2rtTA\_CAGG TetON-Sox10”)



### SOX10-GFP AAVS1 (map “pZ M2rtTA\_CAGG TetON-Sox10 with GFP”)



### FUW-SOX10 viral vector (map “Sox10 in TetO-FUW”)

