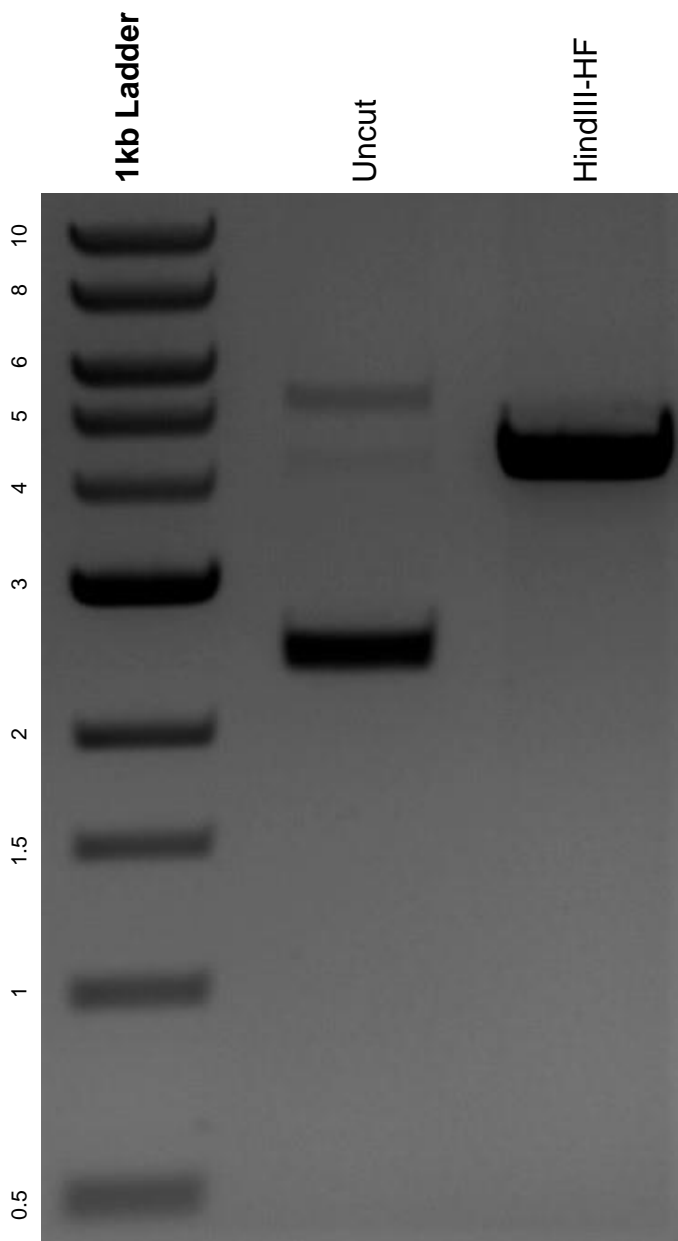


This gel depicts the NEB 1kb ladder and a digestion of the plasmid phRL TK 5BoxB sp 36 with the following enzymes: HindIII-HF.

**Plasmid 115365:**  
phRL TK 5BoxB sp 36



DNA digested with HindIII-HF single digest for **2 hours**.  
Gel: 0.8% agarose stained with 6 uL of ethidium bromide.  
Ran for 1.5 hours at 100 volts.