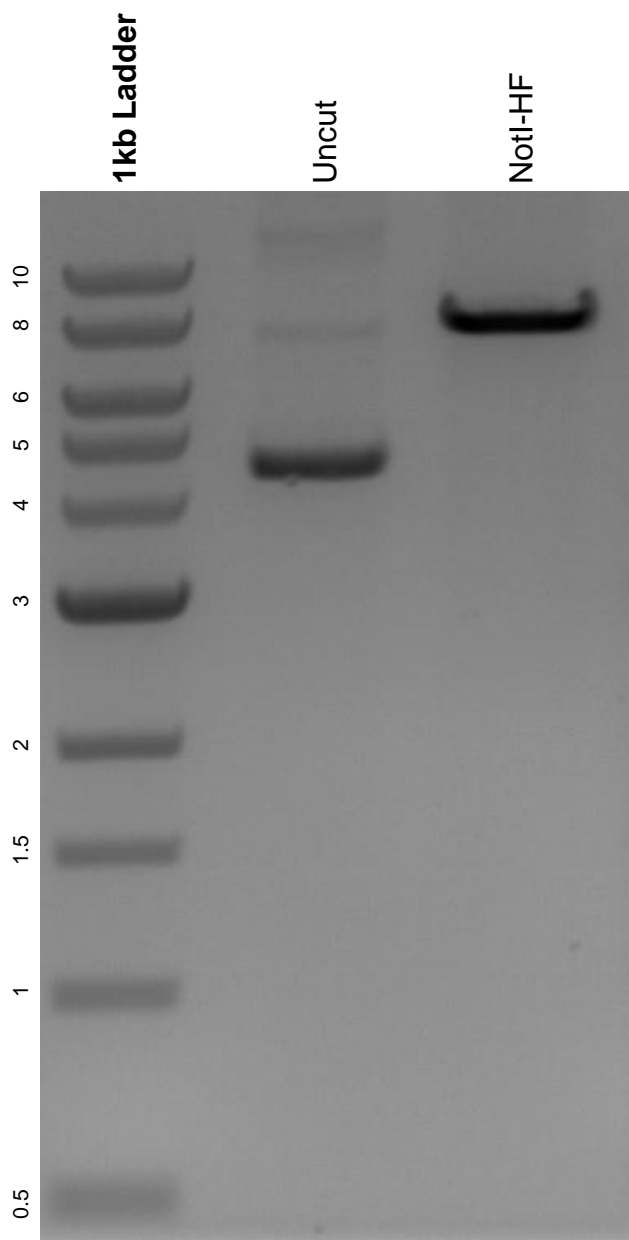


This gel depicts the NEB 1kb ladder and a digestion of the plasmid pGM190oriT with the following enzymes: NotI-HF.

**Plasmid 115679:**  
pGM190oriT



DNA digested with NotI-HF single digest for **2 hours**.  
Gel: 0.8% agarose stained with 6 uL of ethidium bromide.  
Ran for 1.5 hours at 100 volts.