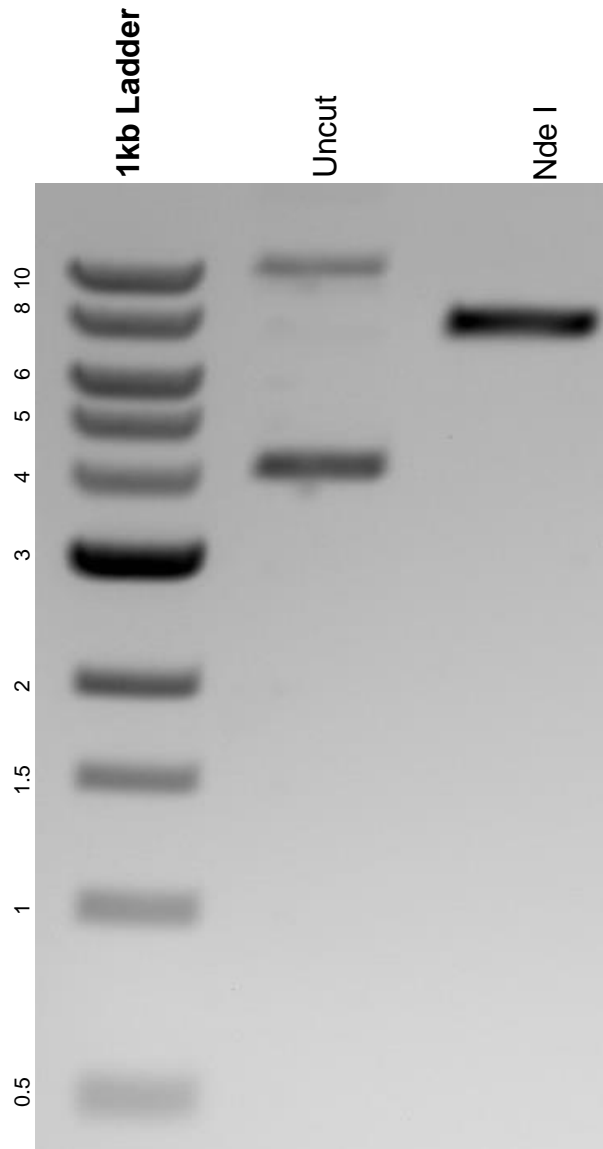


This gel depicts the NEB 1kb ladder and a digestion of the plasmid pGM1192 with the following enzymes: Nde I.

Plasmid 115683:
pGM1192



DNA digested with Nde I single digest for **2 hours**.
Gel: 0.8% agarose stained with 8 uL of ethidium bromide.
Ran for 1.5 hours at 100 volts.