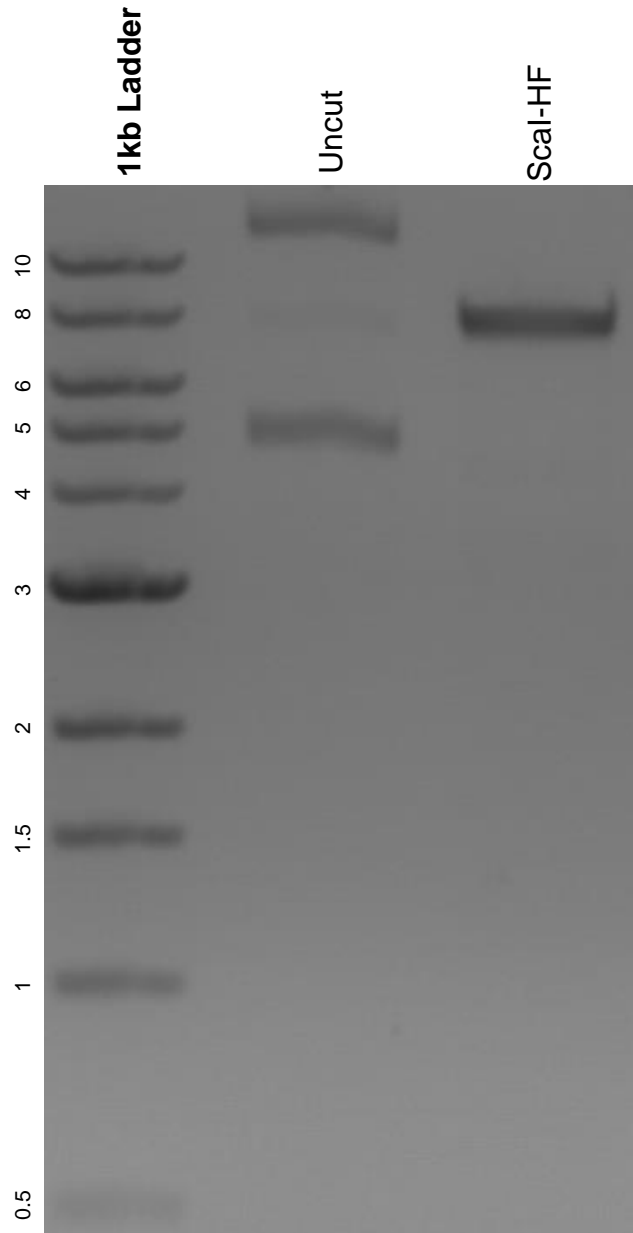


This gel depicts the NEB 1kb ladder and a digestion of the plasmid LV-Sox10MCS5-GFP with the following enzyme: Scal-HF.

Plasmid 115783:
LV-Sox10MCS5-GFP



DNA digested with a Scal-HF single digest for **2 hours**.
Gel: 0.8% agarose stained with 5 uL of ethidium bromide.
Ran for 1.5 hours at 100 volts.