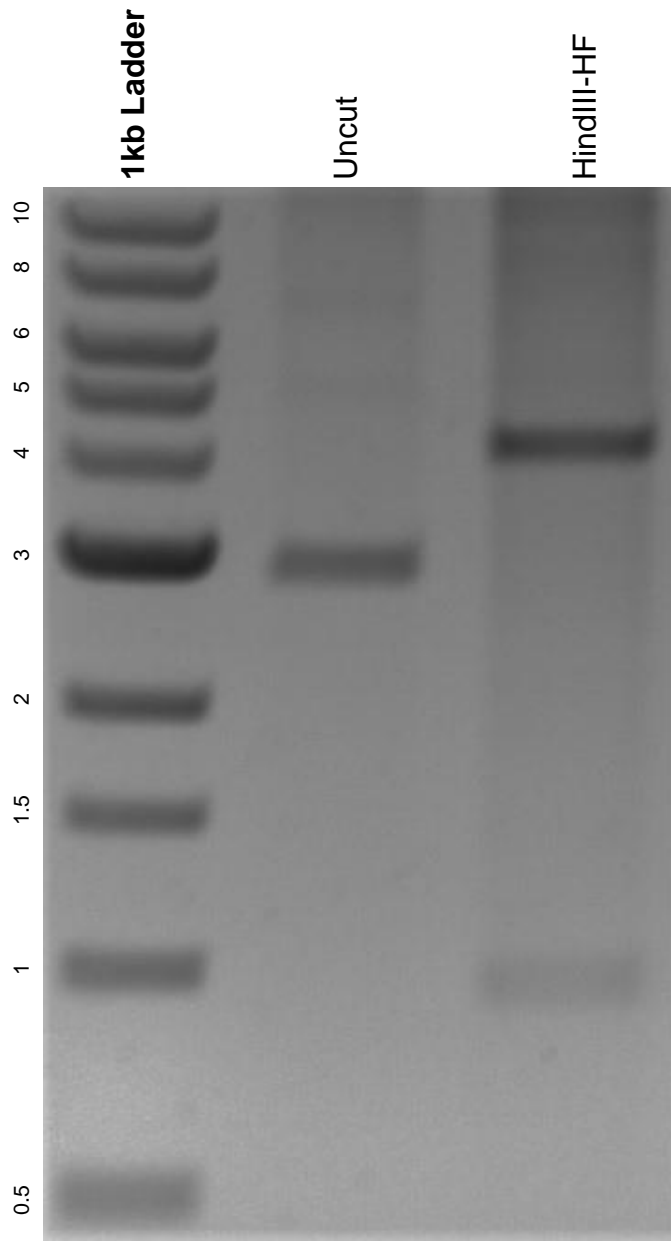


This gel depicts the NEB 1kb ladder and a digestion of the plasmid rk1s with the following enzymes: HindIII-HF.

Plasmid 117424:
rk1s



DNA digested with HindIII-HF single digest for **2 hours**.
Gel: 0.8% agarose stained with 6 uL of ethidium bromide.
Ran for 1.5 hours at 100 volts.