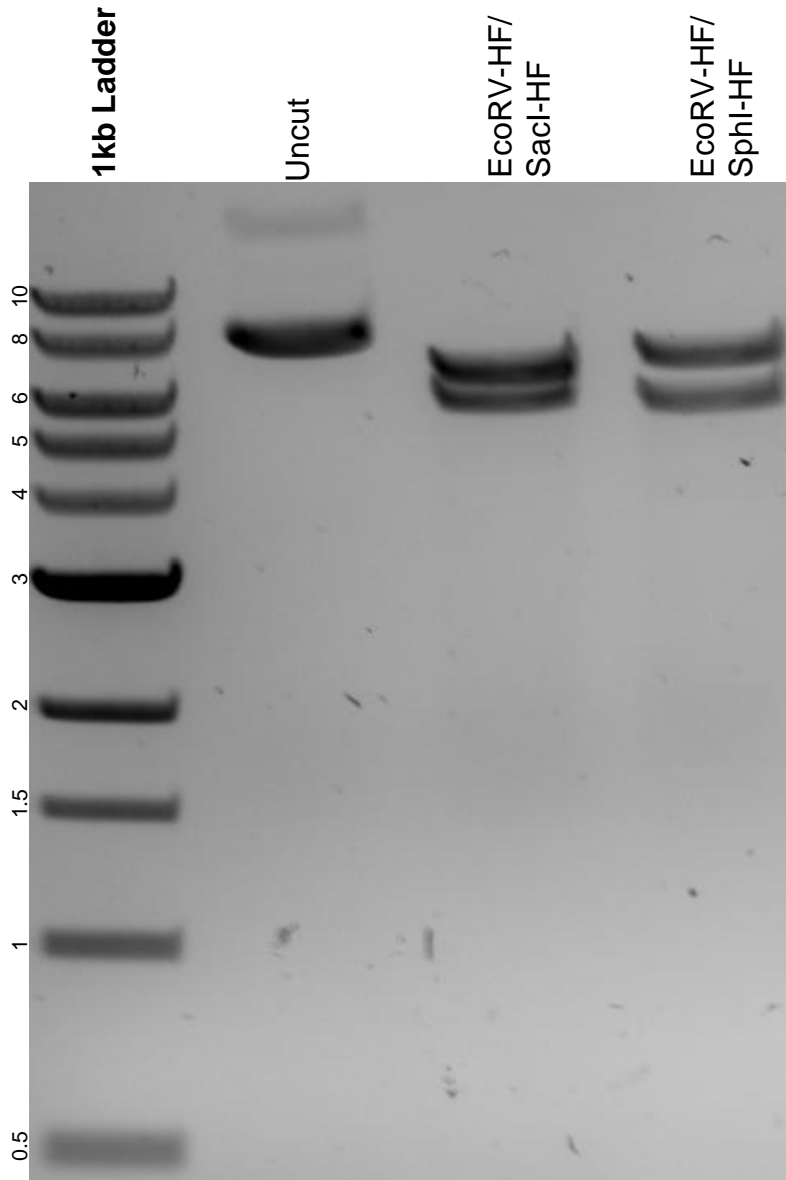


This gel depicts the NEB 1kb ladder and a digestion of the plasmid pCAGGs-NLS-TIR1_P2A_NES-TIR1 with the following enzymes: EcoRV-HF, SacI-HF, and SphI-HF.

Plasmid 117699:
pCAGGs-NLS-TIR1_P2A_NES-TIR1



DNA digested with EcoRV-HF/SacI-HF and EcoRV-HF/SphI-HF double digests for **2 hours**.
Gel: 0.8% agarose stained with 5 μ L of ethidium bromide.
Ran for 1.5 hours at 100 volts.