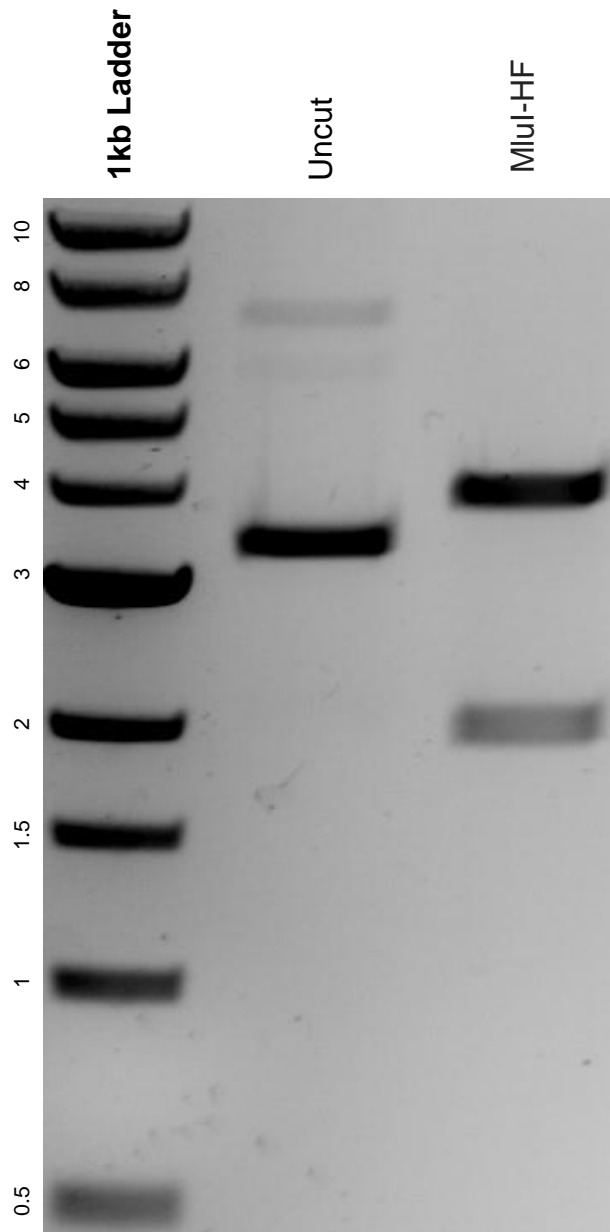


This gel depicts the NEB 1kb ladder and a digestion of the plasmid pNBU2_erm-TetR-P1T_DP-GH023 - NanoLuc with the following enzyme(s): Mlul-HF.

Plasmid 117728:
pNBU2_erm-TetR-P1T_DP-GH023 - NanoLuc



DNA digested with an Mlul-HF single digest for **2 hours**.
Gel: 0.8% agarose stained with 5 uL of SYBR Safe.
Ran for 1.5 hours at 100 volts.