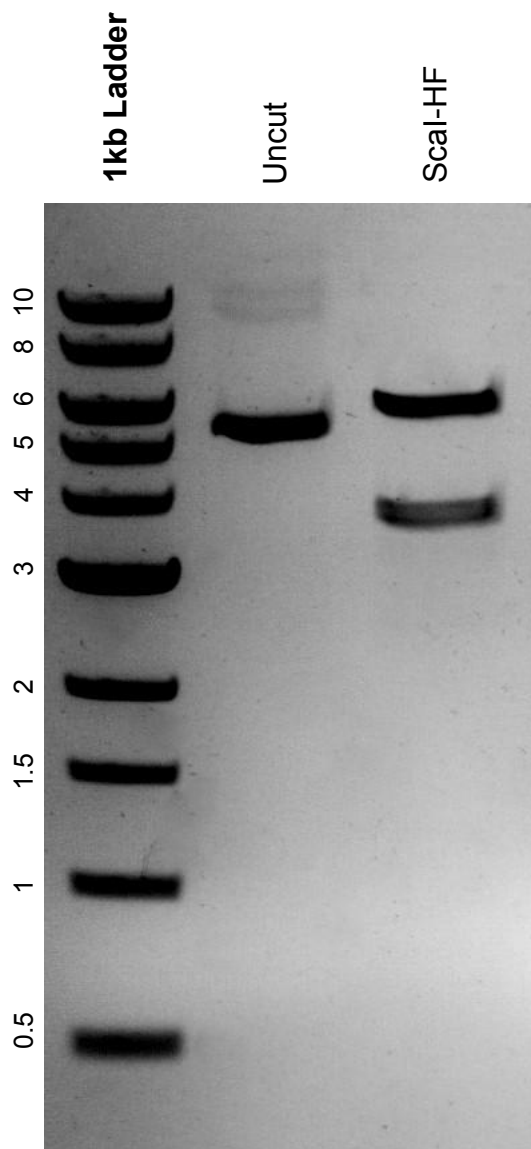


This gel depicts the NEB 1kb Ladder and a digestion of the plasmid pLX307 Luciferase with the following enzymes: Scal-HF

**Plasmid 117734:**  
pLX307 Luciferase



DNA digested with Scal-HF single digest for **2 hours**.  
Gel: 0.8% agarose stained with SYBR Safe.  
Ran for 1.25 hours at 100 volts.