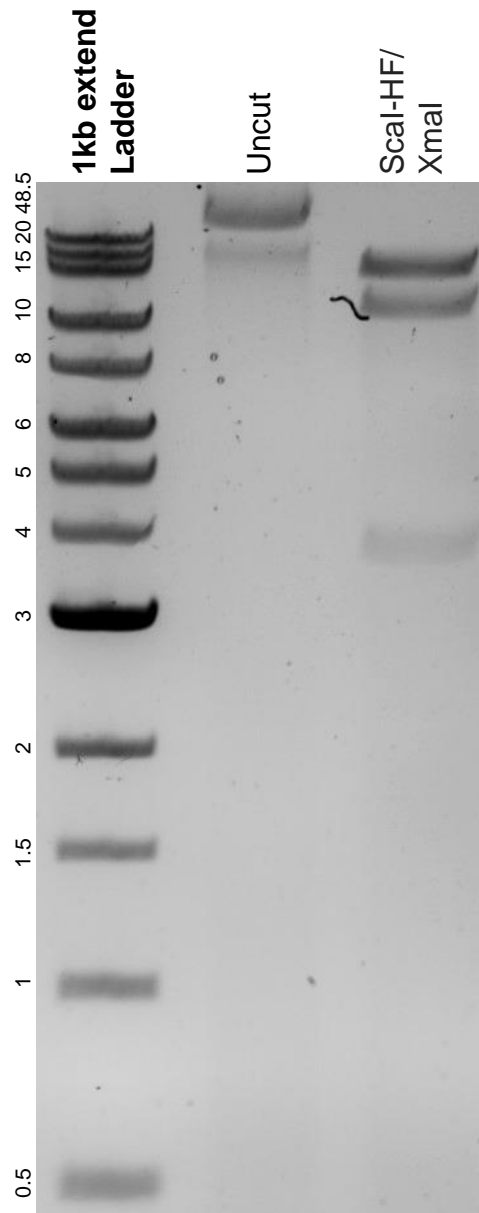


This gel depicts the NEB 1kb extend ladder and a digestion of the plasmid pLD1 translation factors with the following enzyme(s): Scal-HF and XmaI.

Plasmid 117760:
pLD1 translation factors



DNA digested with a Scal-HF/XmaI double digest for **2 hours**.
Gel: 0.8% agarose stained with 5 uL of SYBR Safe.
Ran for 1.5 hours at 100 volts.