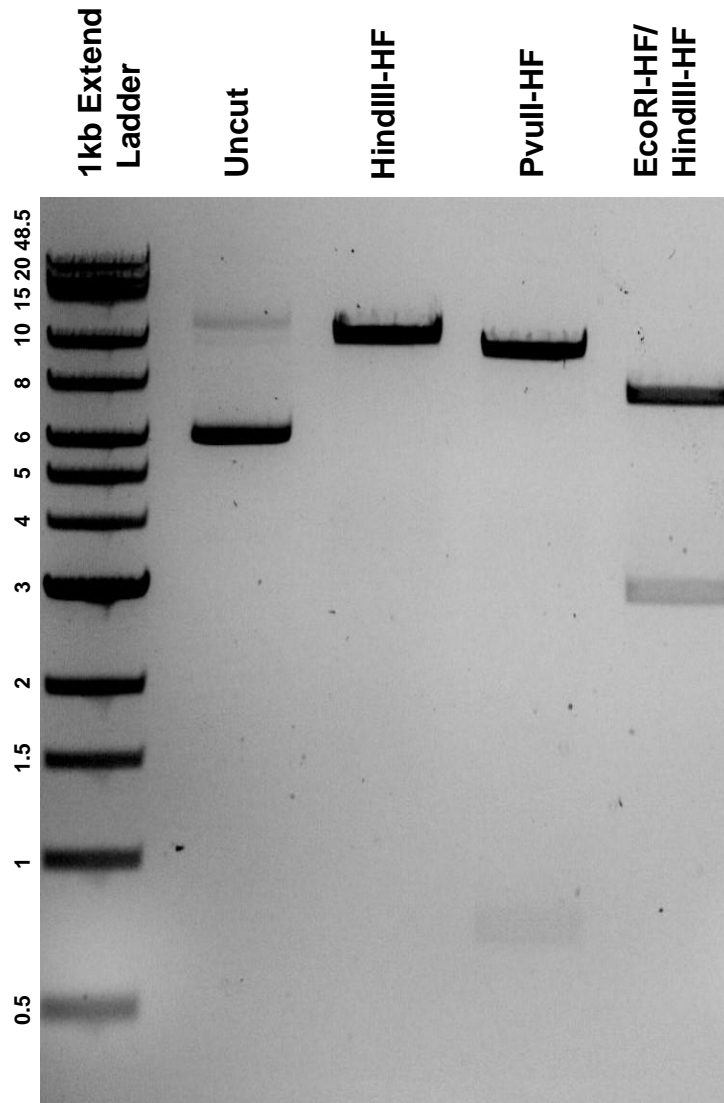


This gel depicts the NEB 1kb Extend Ladder and a digestion of the plasmid **Ubi:Zebrabow** with the following enzyme(s): **HindIII-HF**, **PvuII-HF**, and **EcoRI-HF**

Plasmid 118219
Ubi:Zebrabow



DNA digested with **HindIII-HF** and **PvuII-HF** single digests and **EcoRI-HF/HindIII-HF** double digest for **1 hour**.
Gel: **0.8%** agarose stained with 5 uL of SYBR Safe.
Ran for **1.5 hours** at **100 volts**.