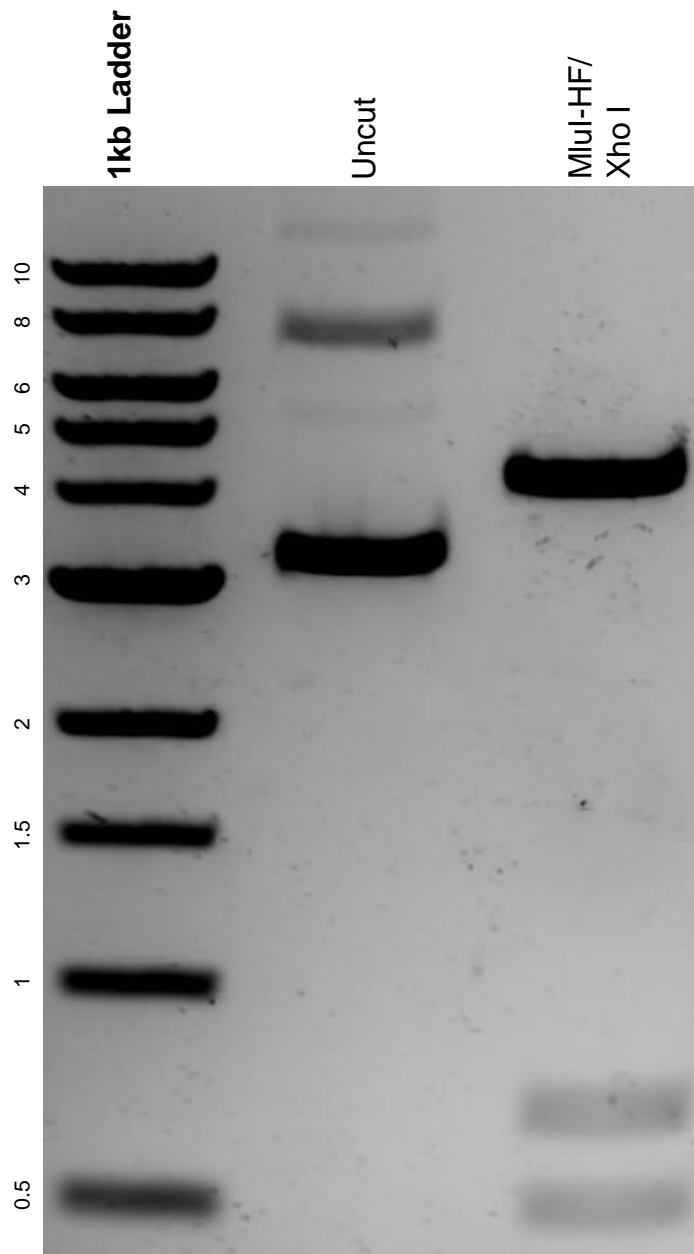


This gel depicts the NEB 1kb ladder and a digestion of the plasmid GFP-ERK2 T183AY185F with the following enzymes: MluI-HF and Xho I.

Plasmid 118299:
GFP-ERK2 T183AY185F



DNA digested with an MluI-HF/Xho I double digest for **2 hours**.
Gel: 0.8% agarose stained with 5 uL of ethidium bromide.
Ran for 1.5 hours at 100 volts.