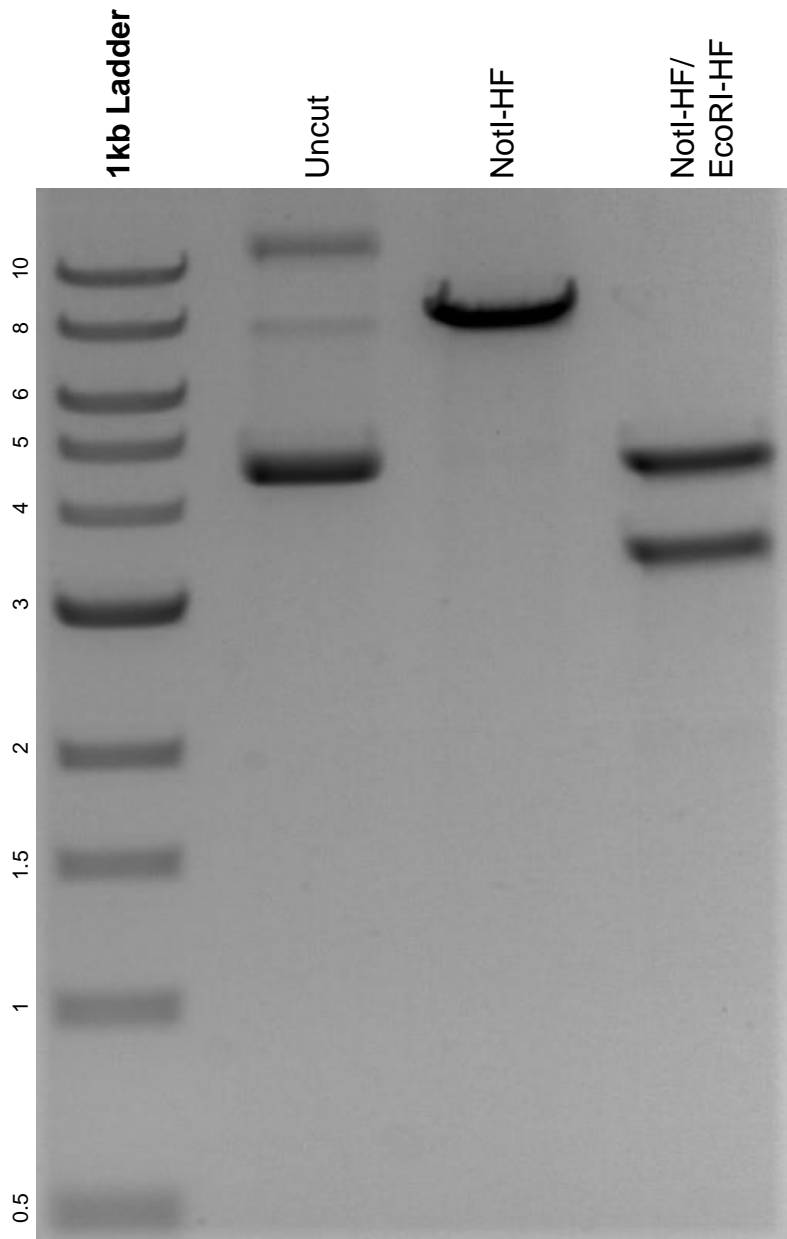


This gel depicts the NEB 1kb ladder and a digestion of the plasmid SaKKH-ABEmax with the following enzymes: NotI-HF and EcoRI-HF.

**Plasmid 119815:  
SaKKH-ABEmax**



DNA digested with NotI-HF single digest and NotI-HF/ EcoRI-HF double digest for **2 hours**.

Gel: 0.8% agarose stained with 6 uL of ethidium bromide.

Ran for 1.5 hours at 100 volts.