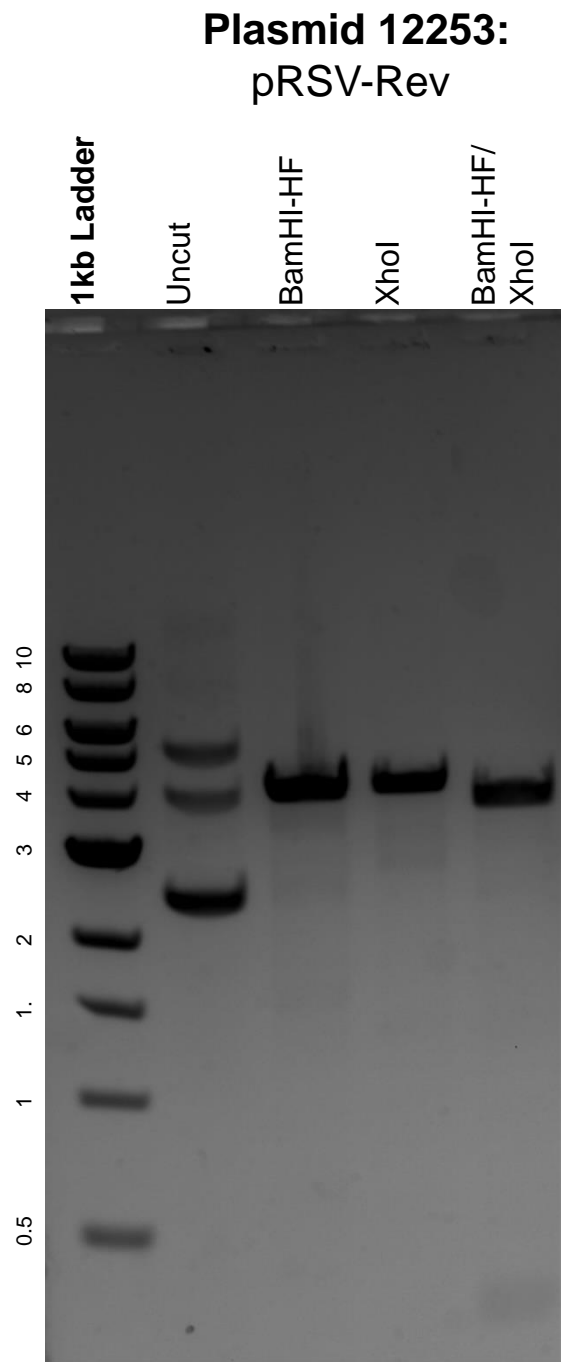


This gel depicts the NEB 1kb ladder and a digestion of the plasmid pRSV-Rev with the following enzymes: BamHI-HF and XhoI.



DNA digested with BamHI-HF and XhoI single digests and BamHI-HF/ XhoI double digest for **2 hours**.

Gel: 0.8% agarose stained with 5 uL of ethidium bromide.

Ran for 1.5 hours at 100 volts.