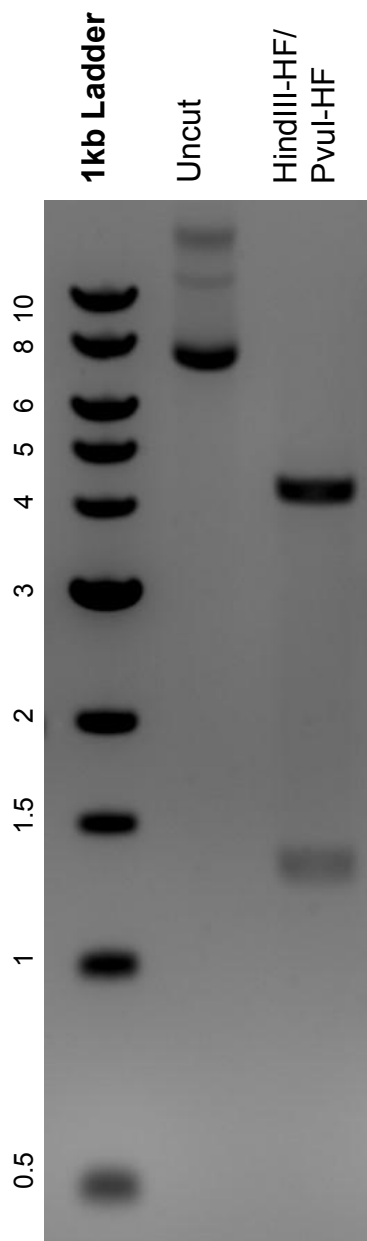


This gel depicts the NEB 1kb Ladder and a digestion of the plasmid pMD2.G with the following enzymes: HindIII-HF, PvuI-HF

Plasmid 12259:
pMD2.G



DNA digested with HindIII-HF/PvuI-HF double digest for **2 hours**.
Gel: 0.8% agarose stained with 5 uL of ethidium bromide.
Ran for 1.5 hours at 100 volts.