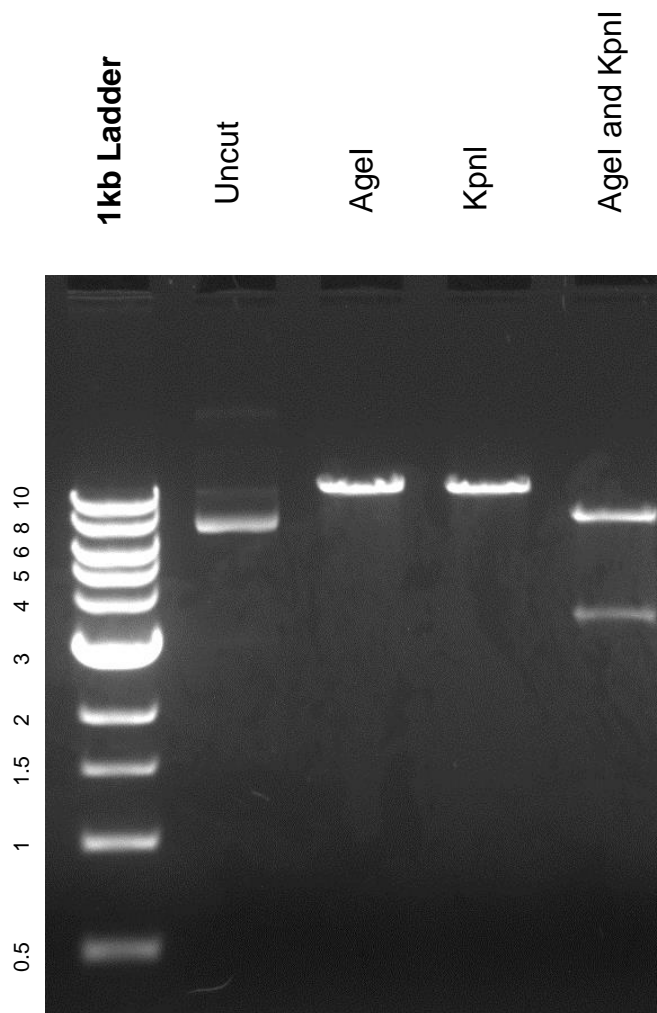


This gel depicts the NEB 1kb ladder and a digestion of the plasmid pCSC-SP-PW-Nep (aka: pBOB-NEP) with the following enzymes: Agel, KpnI, Agel and KpnI

Plasmid 12338
pCSC-SP-PW-Nep (aka: pBOB-NEP)



DNA digested with Agel, KpnI single digests and Agel and KpnI double digests for **2 hours**

Gel: 0.8% TAE stained with 100 ml 1X TAE and 3uL of ethidium bromide
Ran for 2 hours at 70 volts