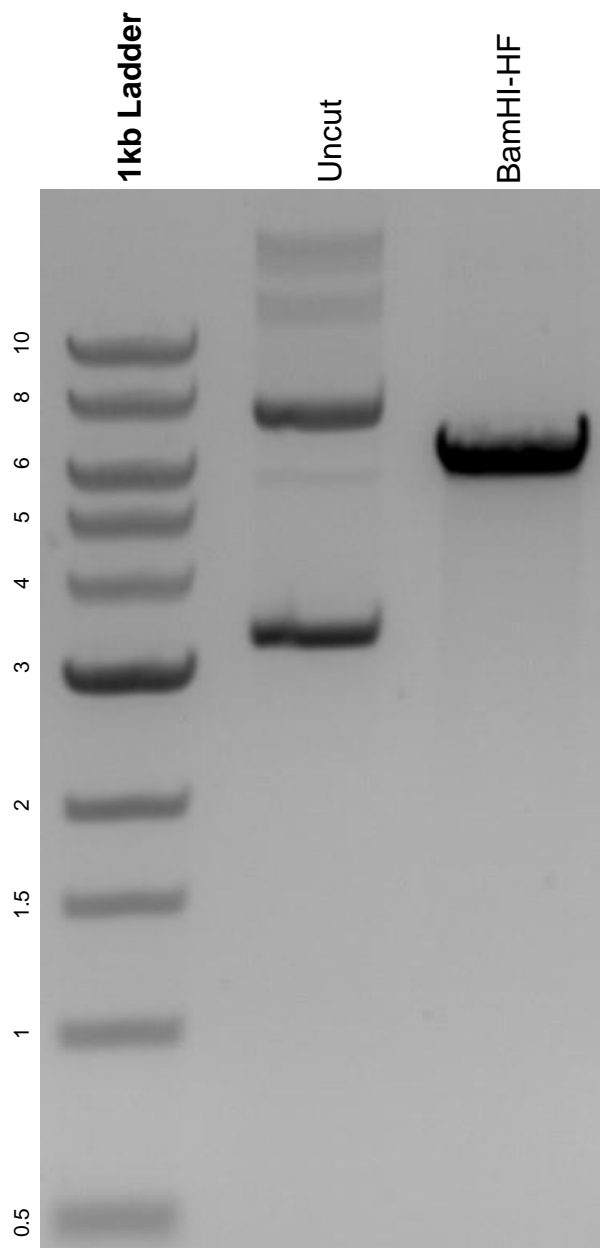


This gel depicts the NEB 1kb ladder and a digestion of the plasmid pET-28a(+)-FGF1-4X with the following enzymes: BamHI-HF.

Plasmid 120282:
pET-28a(+)-FGF1-4X



DNA digested with BamHI-HF single digest for **2 hours**.
Gel: 0.8% agarose stained with 6 uL of ethidium bromide.
Ran for 1.5 hours at 100 volts.