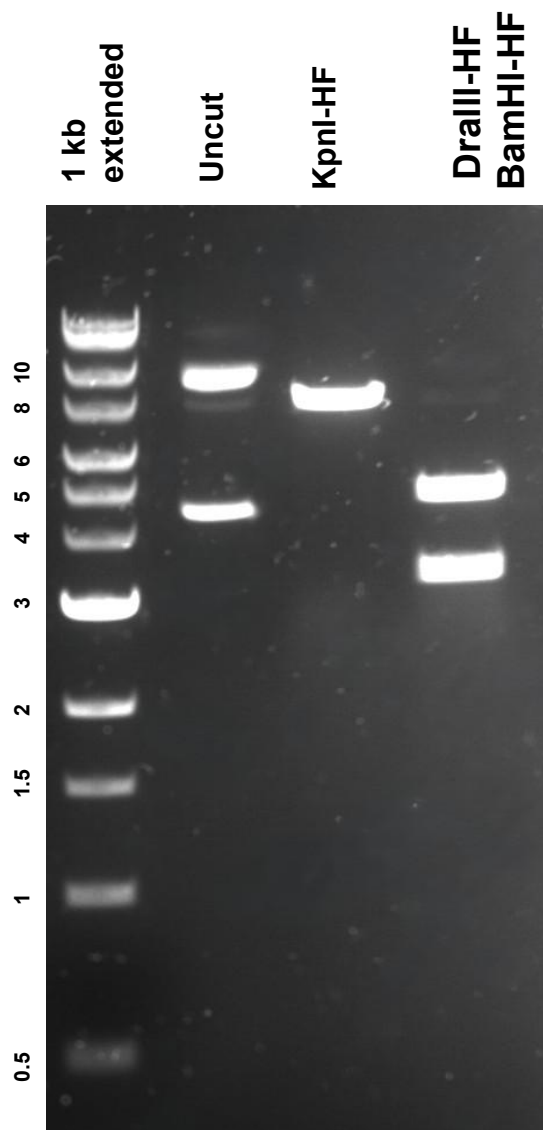


This gel depicts the NEB 1kb extended Ladder and a digestion of the plasmid **pRRL Luciferase** with the following enzyme(s):
Dralll-HF BamHI-HF.

Plasmid 120798: pRRL Luciferase



DNA was digested for 1 hour and run on a 0.8% agarose gel stained with SYBR Safe for 1 hour and 15 minutes (100 volts) with enzymes Dralll-HF single and Dralll-HF BamHI-HF double.