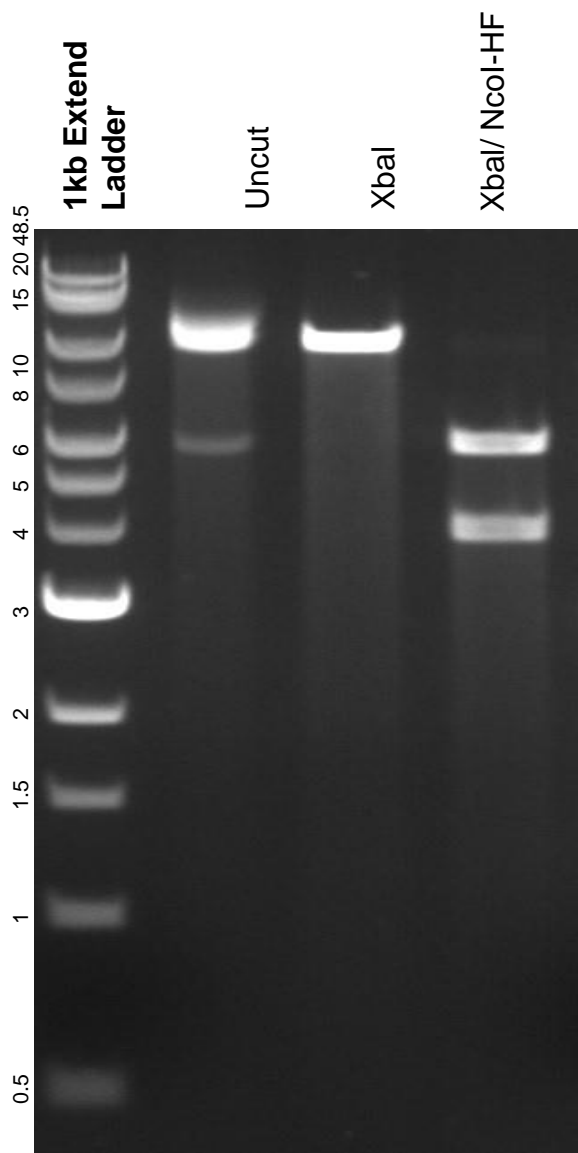


This gel depicts the NEB 1kb Extend Ladder and a digestion of the plasmid pPUR-hU6-Sirius-8XMS2-mU6-Sirius-8XPP7 with the following enzymes: XbaI and NcoI-HF.

Plasmid 121944
pPUR-hU6-Sirius-8XMS2-mU6-Sirius-8XPP7



DNA digested with XbaI a single digest and XbaI/NcoI-HF a double digests for **2 hours**.
Gel: 0.8% agarose stained with 15 uL of SYBR Safe.
Ran for 1.5 hours at 100 volts.