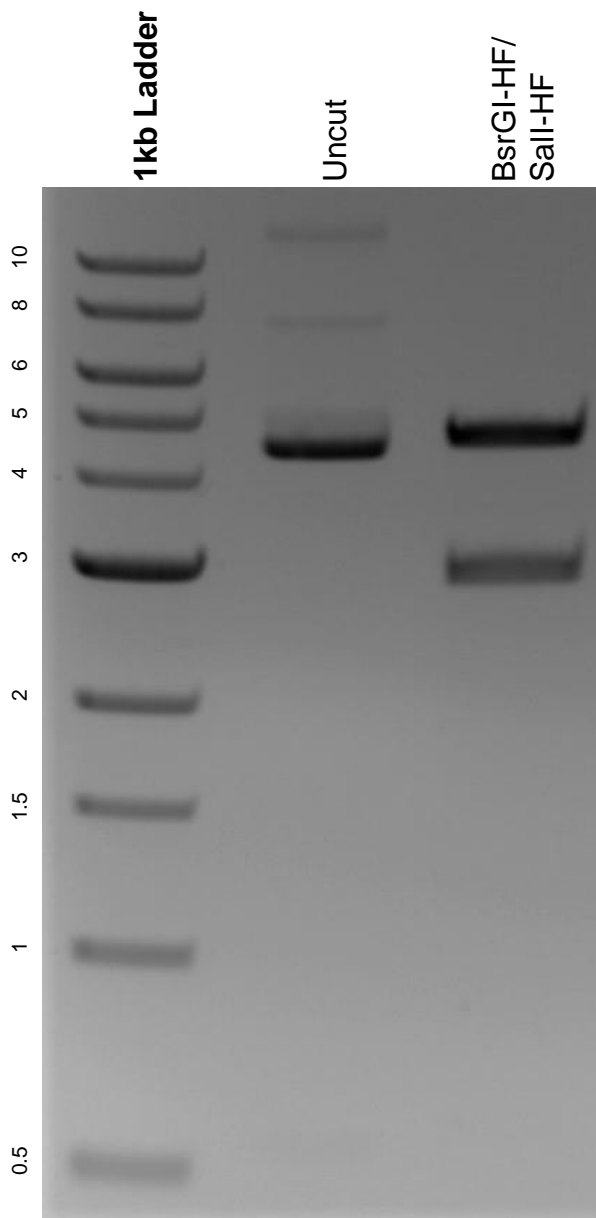


This gel depicts the NEB 1kb ladder and a digestion of the plasmid RFP-(SUMO)6-(SIM)10 with the following enzymes: BsrGI-HF and Sall-HF.

Plasmid 122027:
RFP-(SUMO)6-(SIM)10



DNA digested with BsrGI-HF/ Sall-HF double digest for **2 hours**.
Gel: 0.8% agarose stained with 6 uL of ethidium bromide.
Ran for 1.5 hours at 100 volts.