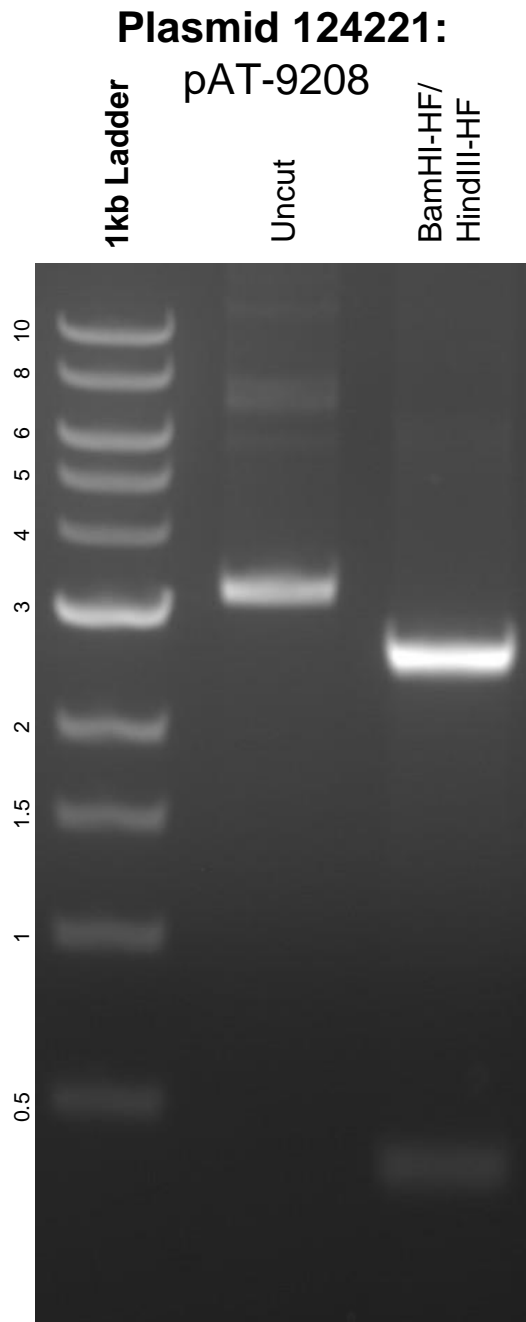


This gel depicts the NEB 1kb ladder and a digestion of the plasmid pAT-9208 with the following enzymes: BamHI-HF and HindIII-HF.



DNA digested with BamHI-HF and HindIII-HF double digest for **2 hours**.  
Gel: 0.8% agarose stained with 5 uL of ethidium bromide.  
Ran for 1.5 hours at 100 volts.