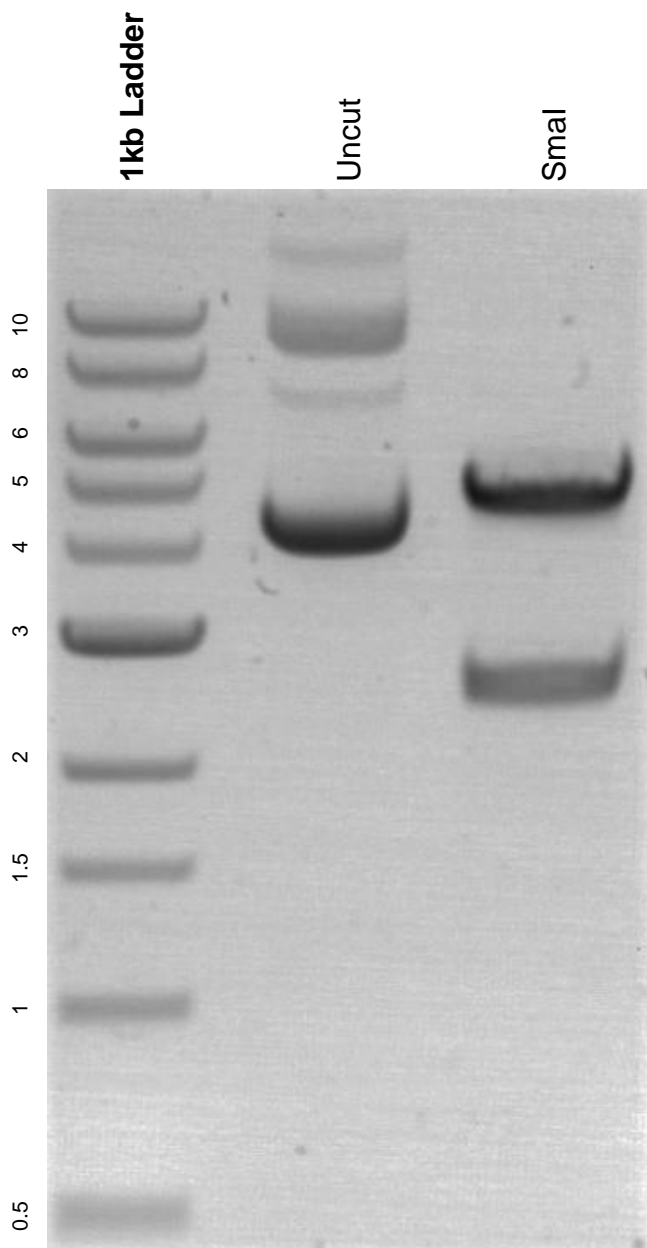


This gel depicts the NEB 1kb ladder and a digestion of the plasmid pAAV-FLEX-SaCas9-U6-sgGabrg2 with the following enzymes: SmaI.

Plasmid 124857:
pAAV-FLEX-SaCas9-U6-sgGabrg2



DNA digested with SmaI single digest for **2 hours**.
Gel: 0.8% agarose stained with 6 uL of ethidium bromide.
Ran for 1.5 hours at 100 volts.