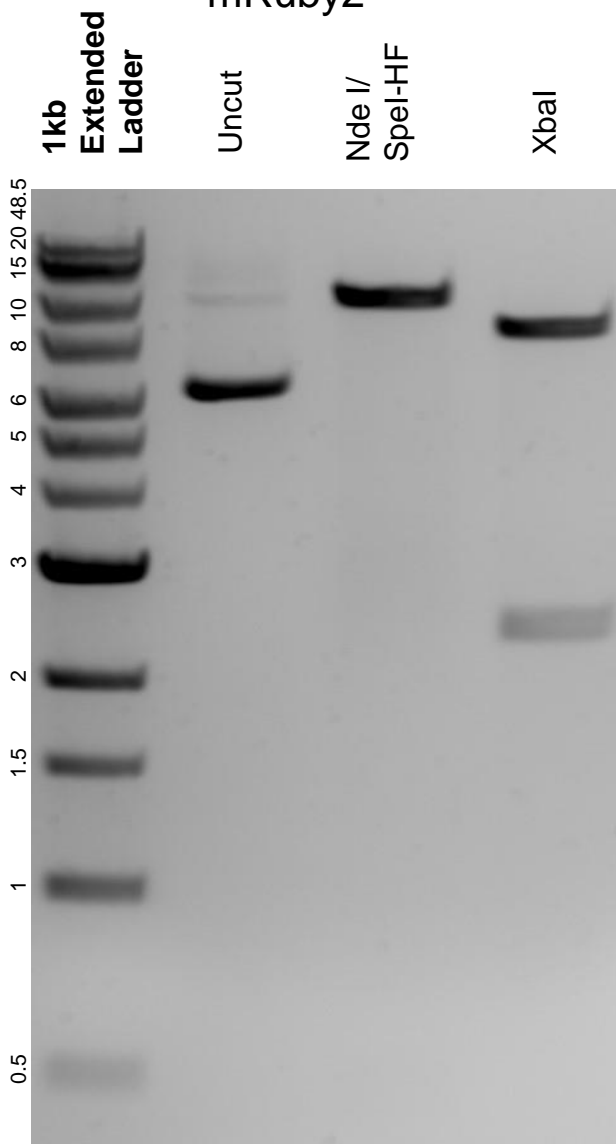


This gel depicts the NEB 1kb extended ladder and a digestion of the plasmid pLenti\_Blast\_DEST mouse\_p65promoter\_mouse\_p65-mRuby2 with the following enzymes: Nde I, Spel-HF, and Xbal.

**Plasmid 124903:**

pLenti\_Blast\_DEST mouse\_p65promoter\_mouse\_p65-mRuby2



DNA digested with Xbal single digest and NdeI and Spel-HF double digest for **2 hours**.  
Gel: 0.8% agarose stained with 5 uL of ethidium bromide.  
Ran for 1.5 hours at 100 volts.