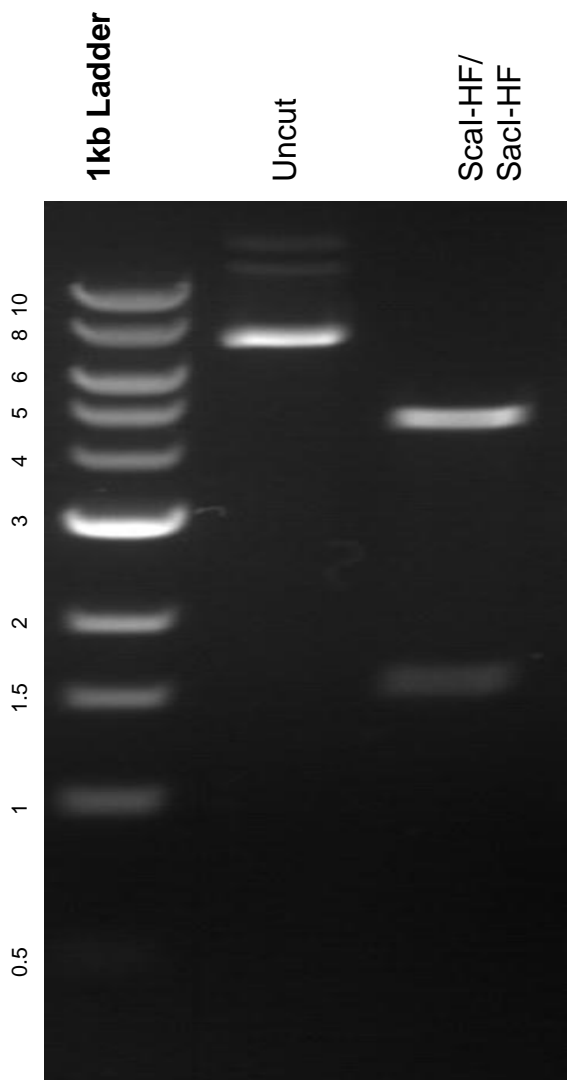


This gel depicts the NEB 1kb Ladder and a digestion of the plasmid TEVSH with the following enzymes: *ScaI*-HF and *SacI*-HF

Plasmid 125194 TEVSH



DNA digested with *ScaI*-HF/*SacI*-HF double digests for **2 hours**.
Gel: 0.8% agarose stained with 5 μ L of ethidium bromide.
Ran for 1.5 hours at 100 volts.