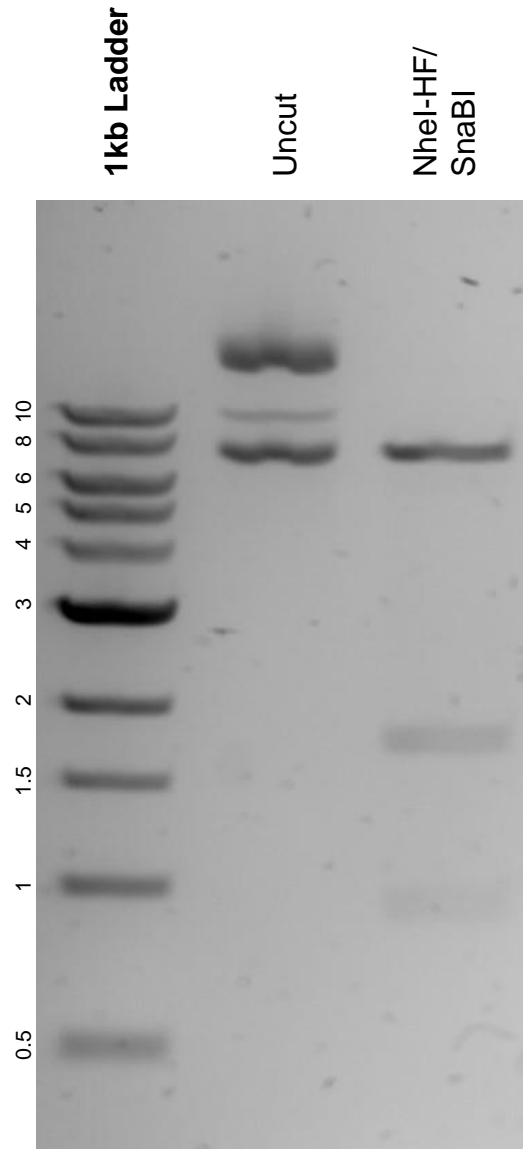


This gel depicts the NEB 1kb ladder and a digestion of the plasmid pLEX307-EF1a-ChR2[H134R]-mCherry-Puro-WPRE with the following enzymes: NheI-HF, SnaBI.

**Plasmid 125256:**  
pLEX307-EF1a-ChR2[H134R]-mCherry-  
Puro-WPRE



DNA digested with NheI-HF and SnaBI double digest for **2 hours**.  
Gel: 0.8% agarose stained with 5 uL of ethidium bromide.  
Ran for 1.5 hours at 100 volts.