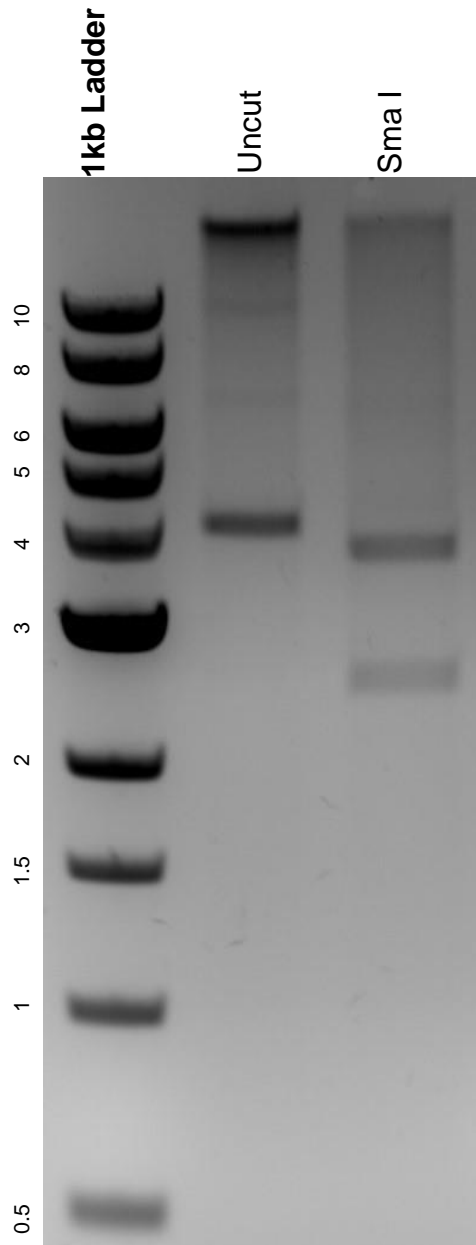


This gel depicts the NEB 1kb ladder and a digestion of the plasmid 125560 with the following enzymes: Sma I

Plasmid 125560:
pAAV-CAG-dLight1.3b



DNA digested with Sma I single digest for **2 hours**.
Gel: 0.8% agarose stained with 6 uL of ethidium bromide.
Ran for 1.5 hours at 100 volts.