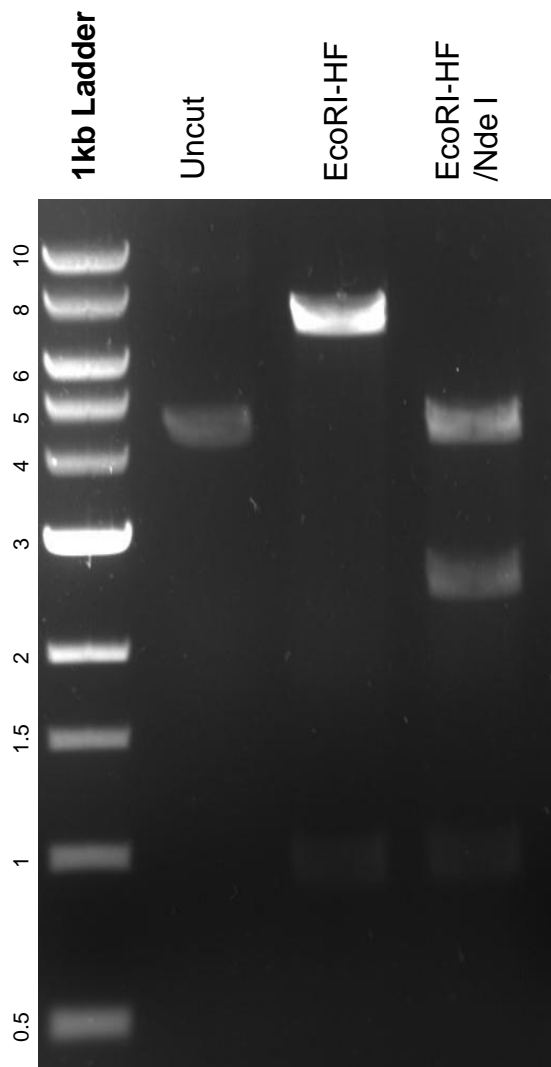


This gel depicts the NEB 1kb Ladder and a digestion of the plasmid MSCV-Syn-PSD95.FingR-eGFP with the following enzymes: EcoRI-HF and Nde I

Plasmid 126212
MSCV-Syn-PSD95.FingR-eGFP



DNA digested with EcoRI-HF single digest and EcoRI-HF/ NdeI double digests for 2 hours.
Gel: 0.8% agarose stained with 15 uL of SYBR Safe.
Ran for 1.5 hours at 100 volts.