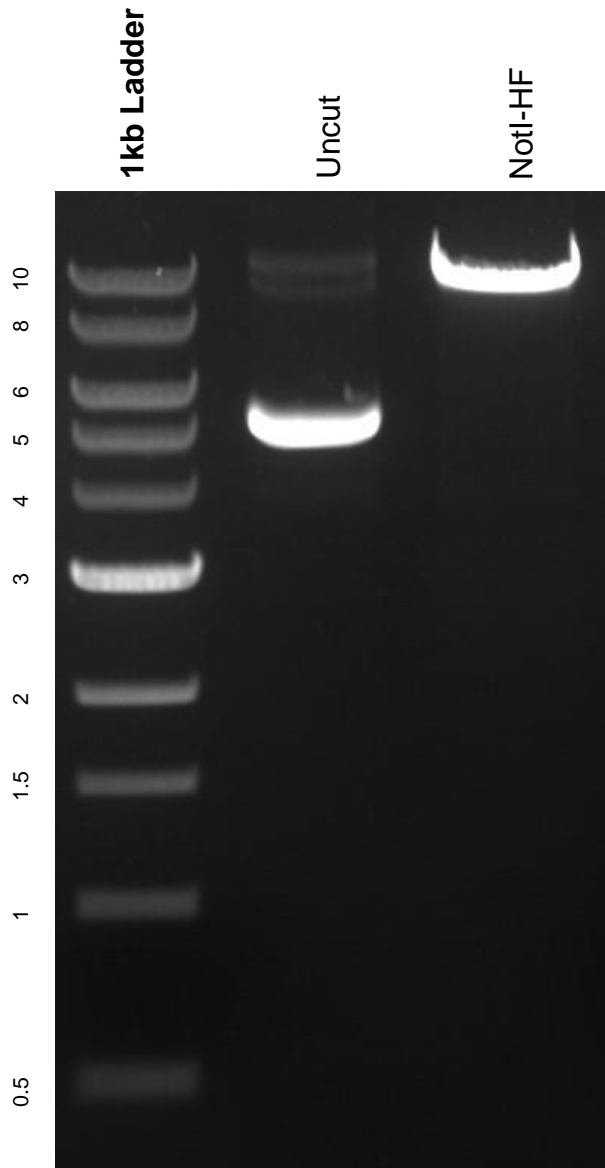


This gel depicts the NEB 1kb Ladder and a digestion of the plasmid pLenti-mCherry-Mango II x 24 with the following enzyme: NotI-HF

Plasmid 127587
pLenti-mCherry-Mango II x 24



DNA digested with NotI-HF single digest and for **2 hours**.
Gel: 0.8% agarose stained with 5 uL of ethidium bromide.
Ran for 1.5 hours at 100 volts.