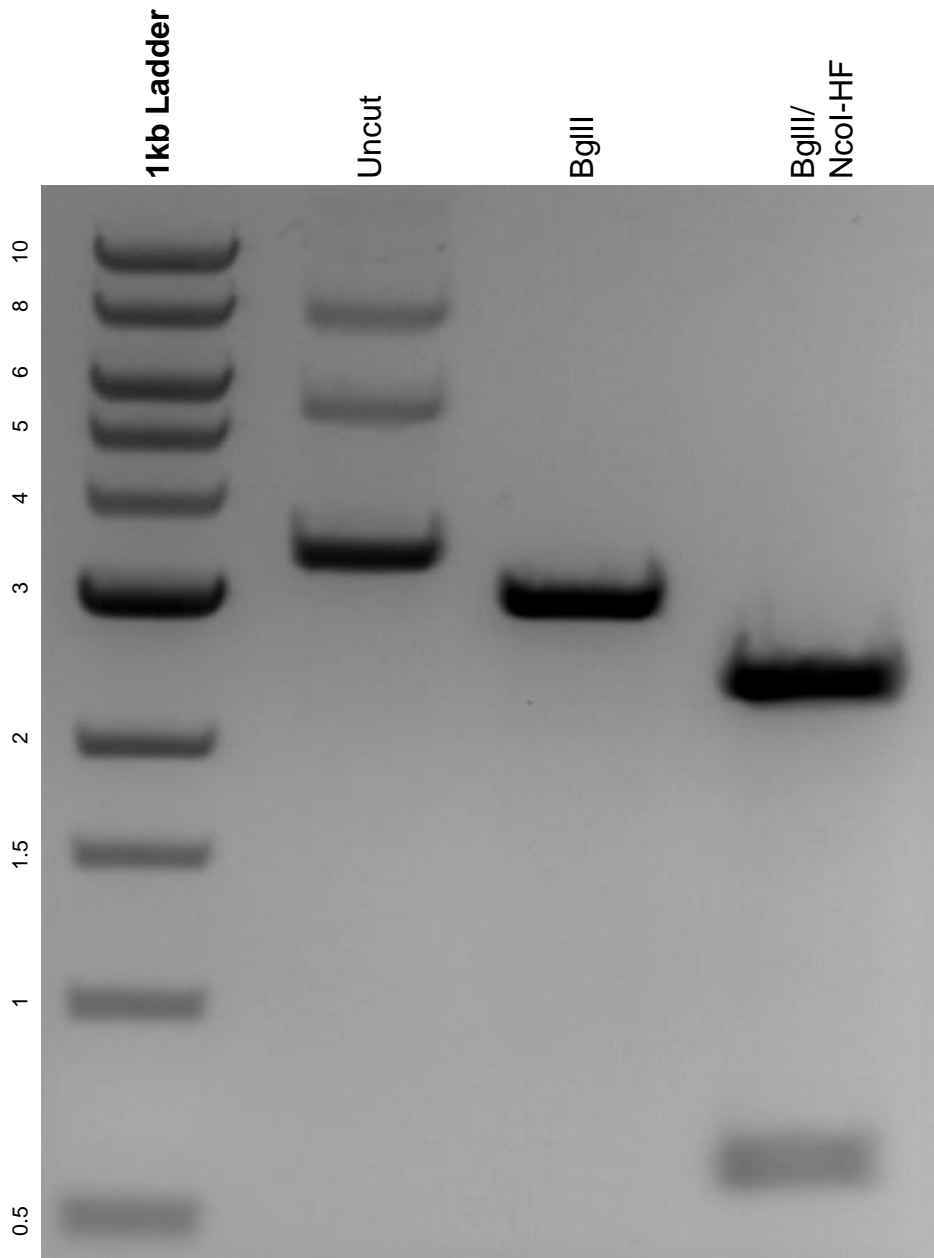


This gel depicts the NEB 1kb ladder and a digestion of the plasmid pDonor_ShCAST_kanR with the following enzymes: BglII and NcoI-HF

Plasmid 127924:
pDonor_ShCAST_kanR



DNA digested with BglII single digest and BglII/ NcoI-HF double digest for **2 hours**.
Gel: 0.8% agarose stained with 6 uL of ethidium bromide.
Ran for 1.5 hours at 100 volts.