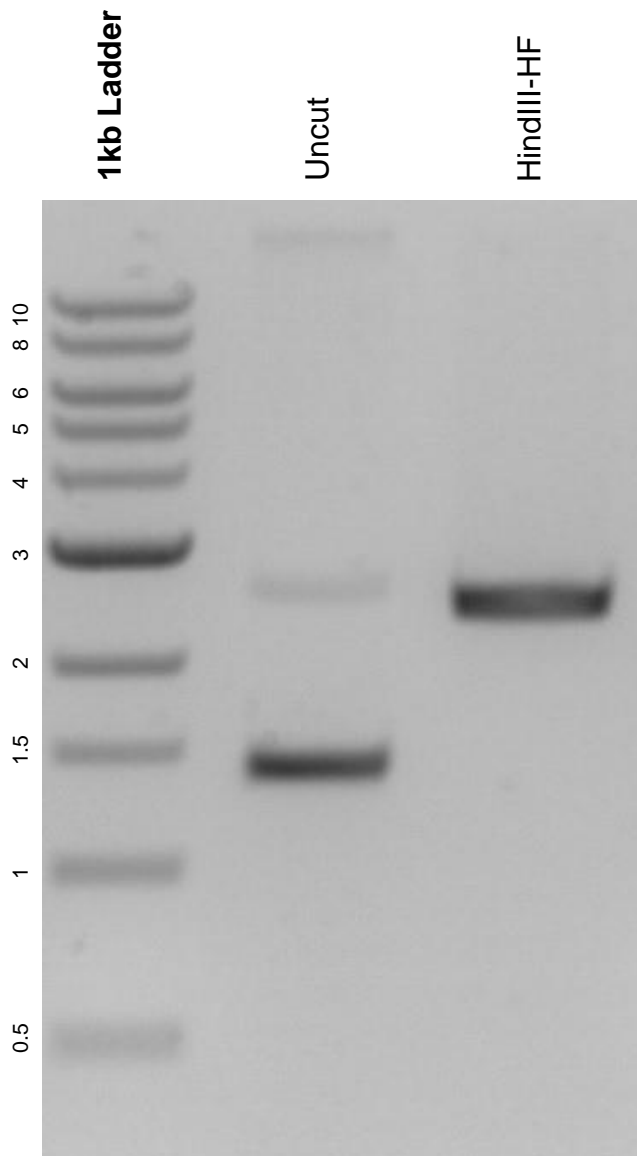


This gel depicts the NEB 1kb ladder and a digestion of the plasmid pFH49 with the following enzymes: HindIII-HF

**Plasmid 128211:
pFH49**



DNA digested with HindIII-HF single digest for **2 hours**.
Gel: 0.8% agarose stained with 5 uL of ethidium bromide.
Ran for 1.5 hours at 100 volts.