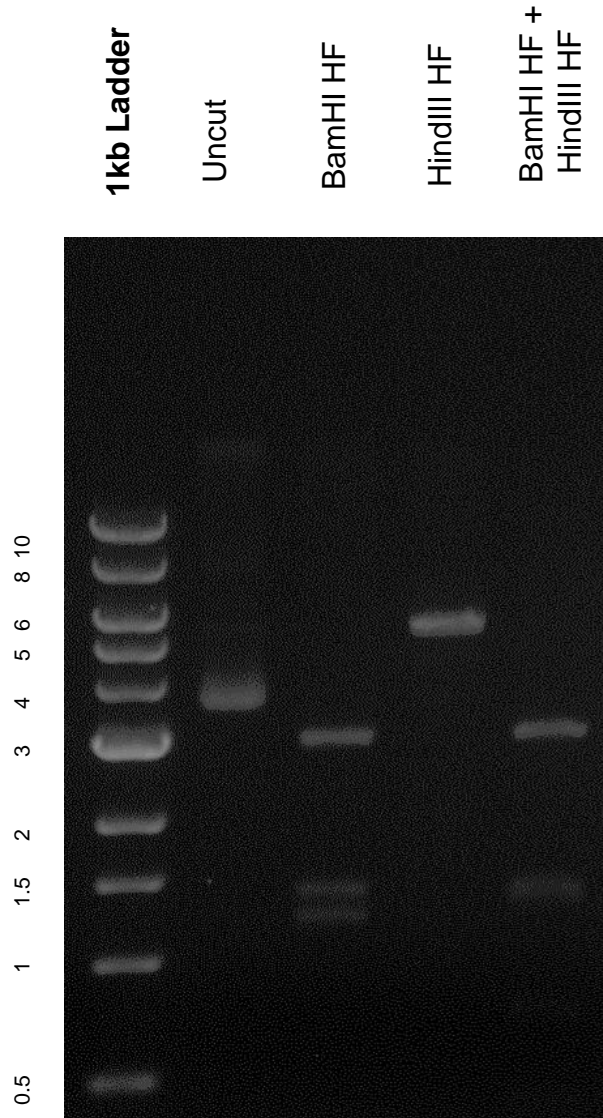


This gel depicts the NEB 1kb ladder and a digestion of the plasmid PGKneotpAlox2 with the following enzymes: BamHI HF, HindIII HF and BamHI HF + HindIII HF

Plasmid 13444: PGKneotpAlox2



DNA digested with BamHI HF, HindIII single digests and BamHI HF + HindIII HF double digest for **2 hours**

Gel: .8% TAE stained with 150 ml 1X TAE and 3uL of ethidium bromide

Ran for 1 hour at 100 volts