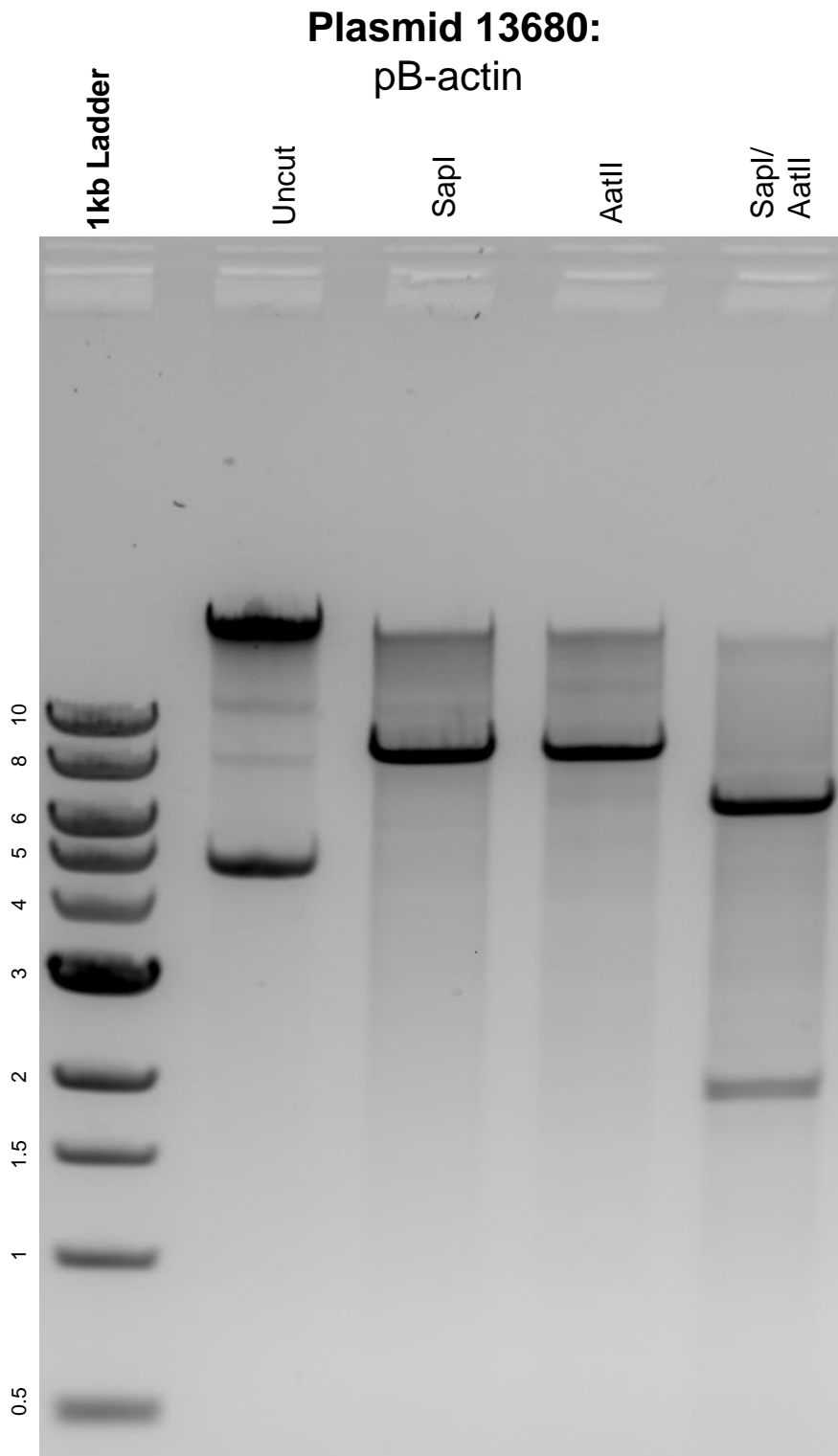


This gel depicts the NEB 1kb ladder and a digestion of the plasmid pB-actin with the following enzymes: Sapl and AatII.



DNA digested with Sapl and AatII single digests and Sapl/AatII double digest for **2 hours**.
Gel: 0.8% agarose stained with 5 uL of ethidium bromide.
Ran for 1.5 hours at 100 volts.