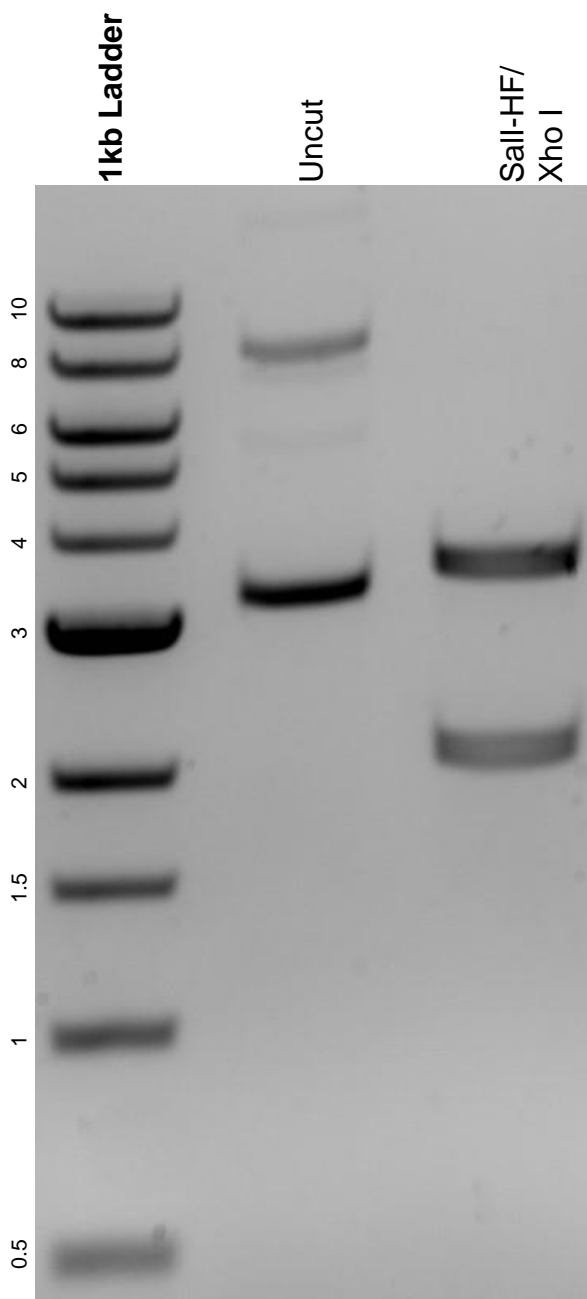


This gel depicts the NEB 1kb ladder and a digestion of the plasmid pCAG-Flpe with the following enzymes: Sall-HF and Xho I.

**Plasmid 13787:**  
pCAG-Flpe



DNA digested with a Sall-HF/Xho I double digest for **2 hours**.  
Gel: 0.8% agarose stained with 5 uL of ethidium bromide.  
Ran for 1.5 hours at 100 volts.