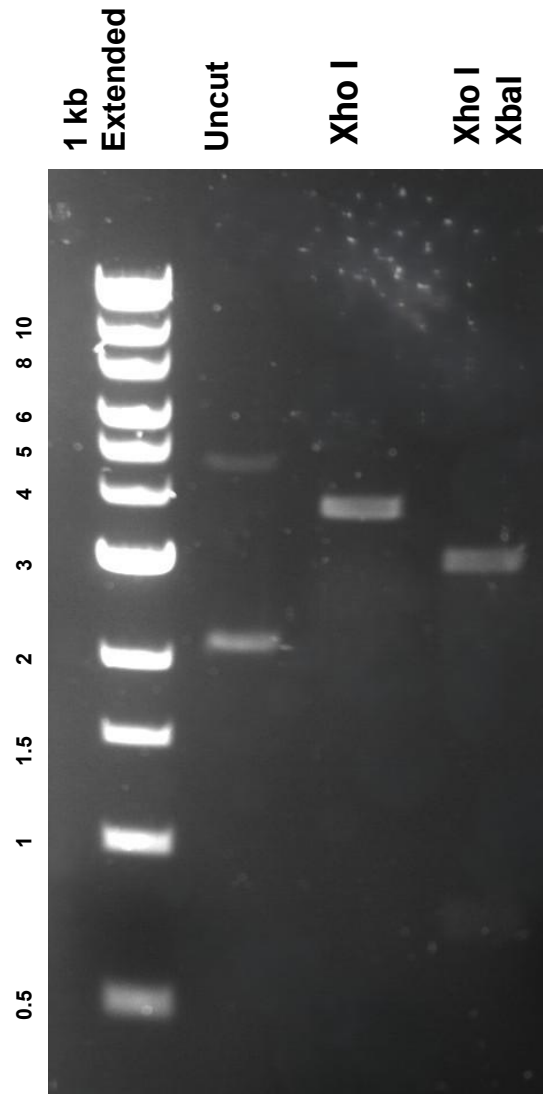


This gel depicts the NEB 1kb extended Ladder and a digestion of the plasmid **pTRE3G-Bi- α -chain** with the following enzyme(s): **Xho I XbaI**

Plasmid 133730: pTRE3G-Bi- α -chain



DNA was digested for 1 hour and run on a 0.8% agarose gel stained with SYBR Safe for 1 hour and 15 minutes (100 volts) with enzymes XhoI single and XhoI XbaI double.