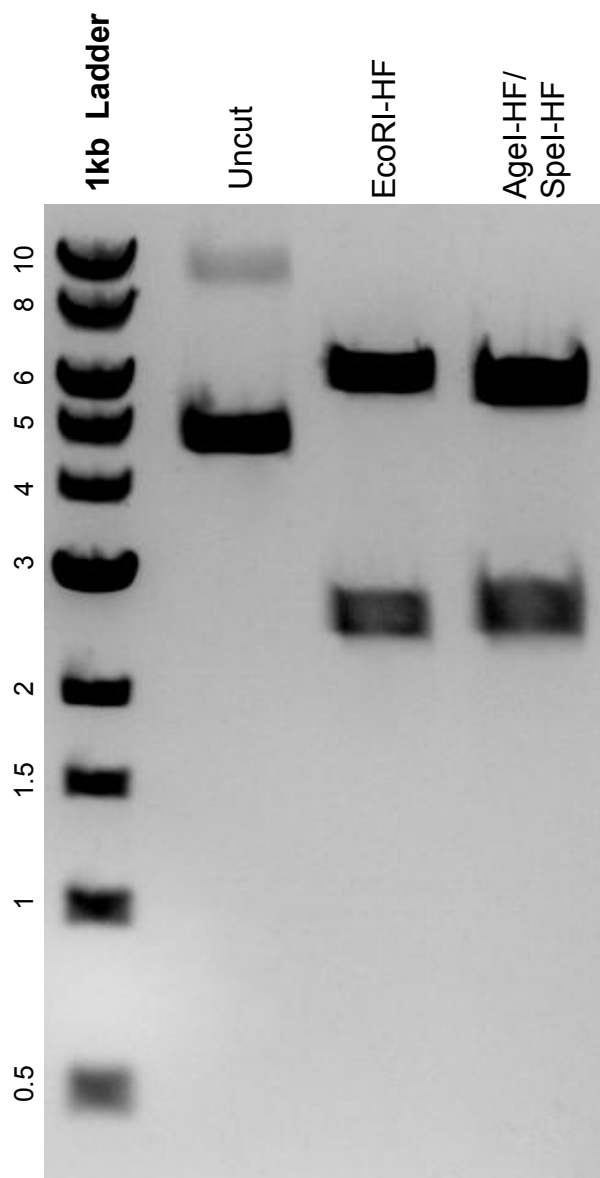


This gel depicts the NEB 1kb Ladder and a digestion of the plasmid ALKBH5-dCas9 with the following enzymes: EcoRI-HF, AgeI-HF, SpeI-HF

Plasmid 134783:
ALKBH5-dCas9



DNA digested with EcoRI-HF single digest and AgeI-HF/SpeI-HF double digest for **2 hours**.

Gel: 0.8% agarose stained with SYBR Safe.

Ran for 1.25 hours at 100 volts.