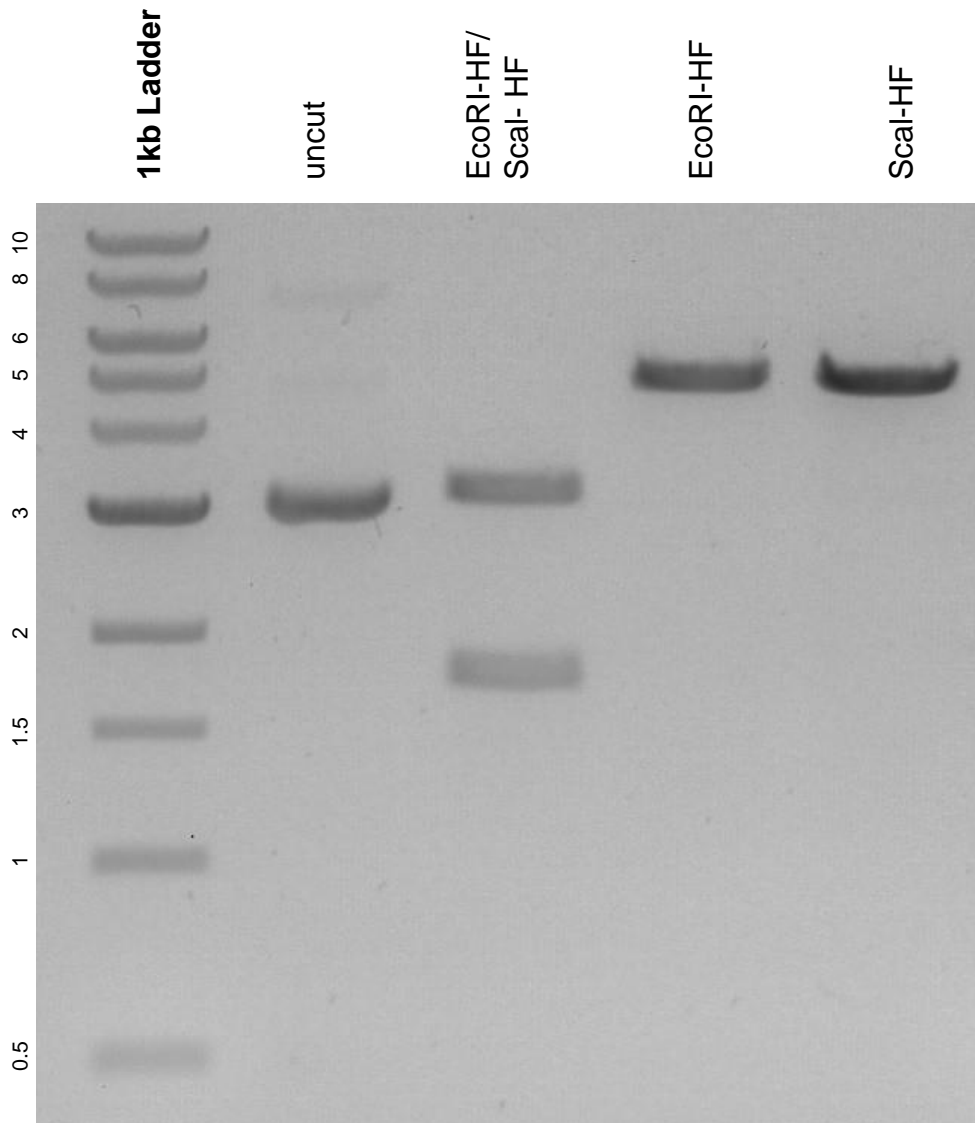


This gel depicts the NEB 1kb ladder and a digestion of the plasmid SUPERBLADE5 with the following enzymes: EcoRI-HF and Scal-HF.

### Plasmid 134913: SUPERBLADE5



DNA digested with EcoRI-HF and Scal-HF single digests and EcoRI-HF and Scal-HF double digest for **2 hours**.

Gel: 0.8% agarose stained with 5  $\mu$ L of ethidium bromide.

Ran for 1.5 hours at 100 volts.