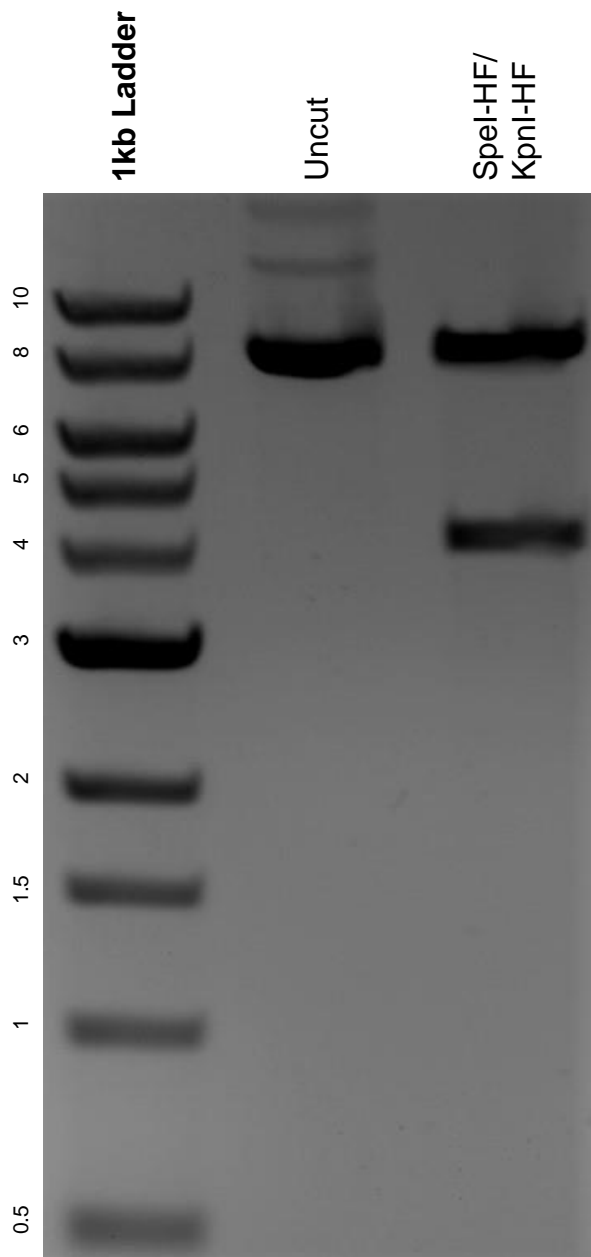


This gel depicts the NEB 1kb ladder and a digestion of the plasmid pCZGY2729 with the following enzymes: SpeI-HF and KpnI-HF.

Plasmid 135096:
pCZGY2729



DNA digested with SpeI-HF/ KpnI-HF double digest for **2 hours**.
Gel: 0.8% agarose stained with 6 uL of ethidium bromide.
Ran for 1.5 hours at 100 volts.