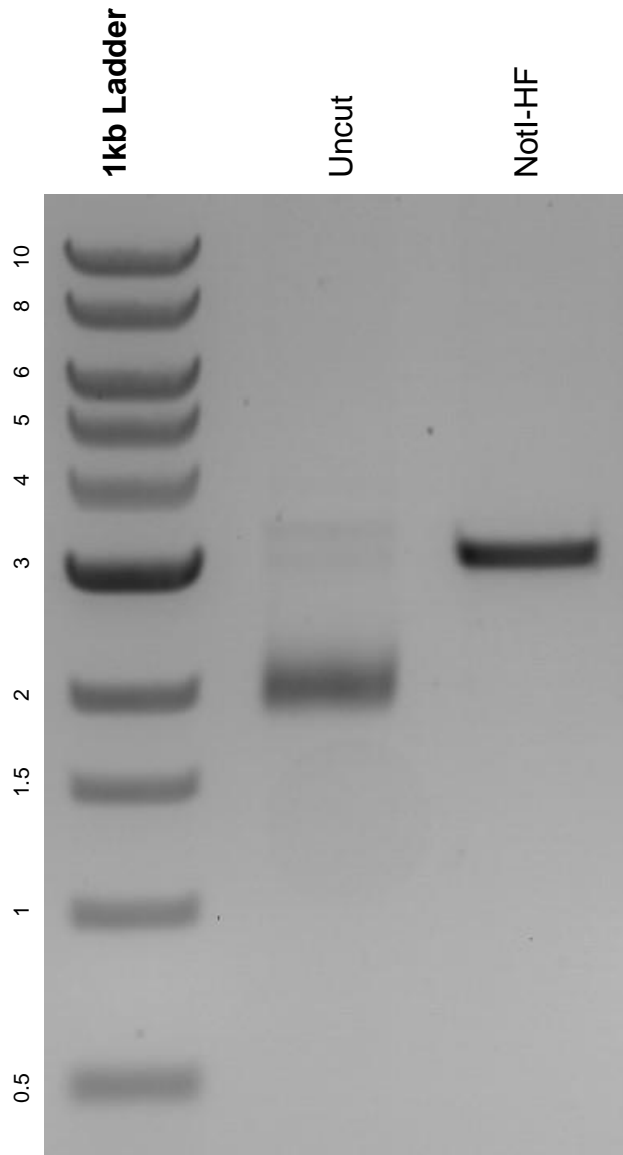


This gel depicts the NEB 1kb ladder and a digestion of the plasmid hU6-Sa_tracr with the following enzymes: NotI-HF

Plasmid 135973:
hU6-Sa_tracr



DNA digested with NotI-HF single digest for **2 hours**.
Gel: 0.8% agarose stained with 6 uL of ethidium bromide.
Ran for 1.5 hours at 100 volts.