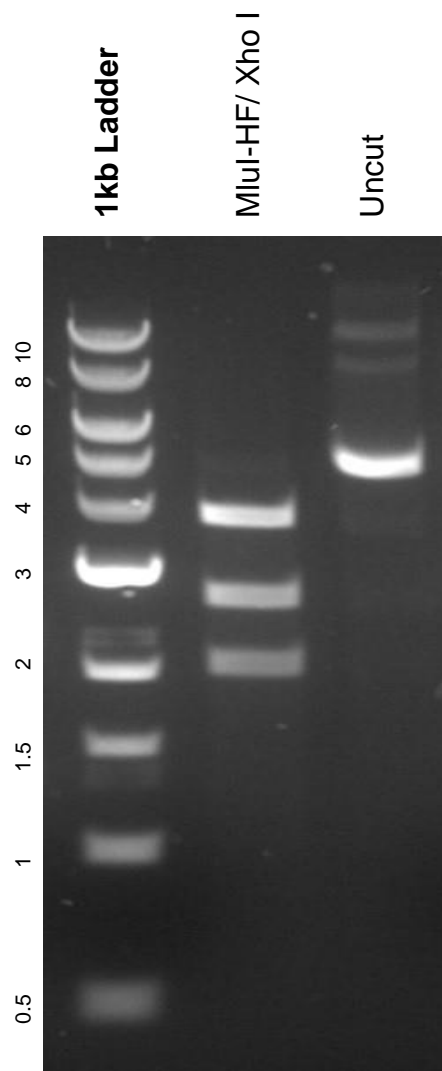


This gel depicts the NEB 1kb Ladder and a digestion of the plasmid pSLCAR-CD19-28z with the following enzymes: MluI-HF and Xho I

**Plasmid 135991**  
pSLCAR-CD19-28z



DNA digested with XMLuI-HF and Xho I double digests for **2 hours**.  
Gel: 0.8% agarose stained with 5 uL of ethidium bromide.  
Ran for 1.5 hours at 100 volts.