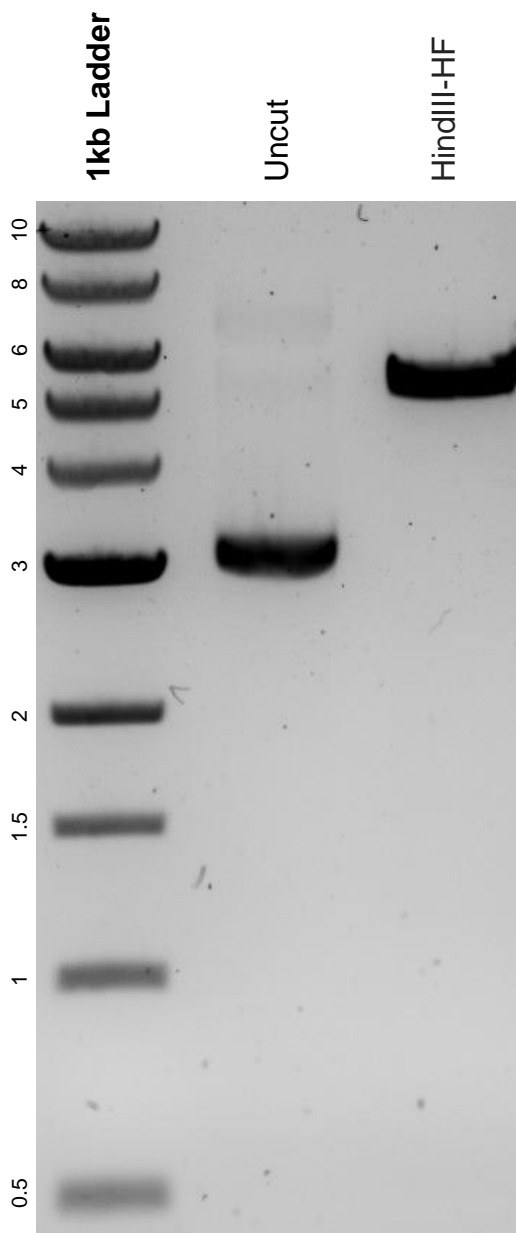


This gel depicts the NEB 1kb ladder and a digestion of the plasmid pCS2+HyPer7 with the following enzyme(s): HindIII-HF.

Plasmid 136466:
pCS2+HyPer7



DNA digested with a HindIII-HF single digest for **2 hours**.
Gel: 0.8% agarose stained with 5 uL of SYBR Safe.
Ran for 1.5 hours at 100 volts.