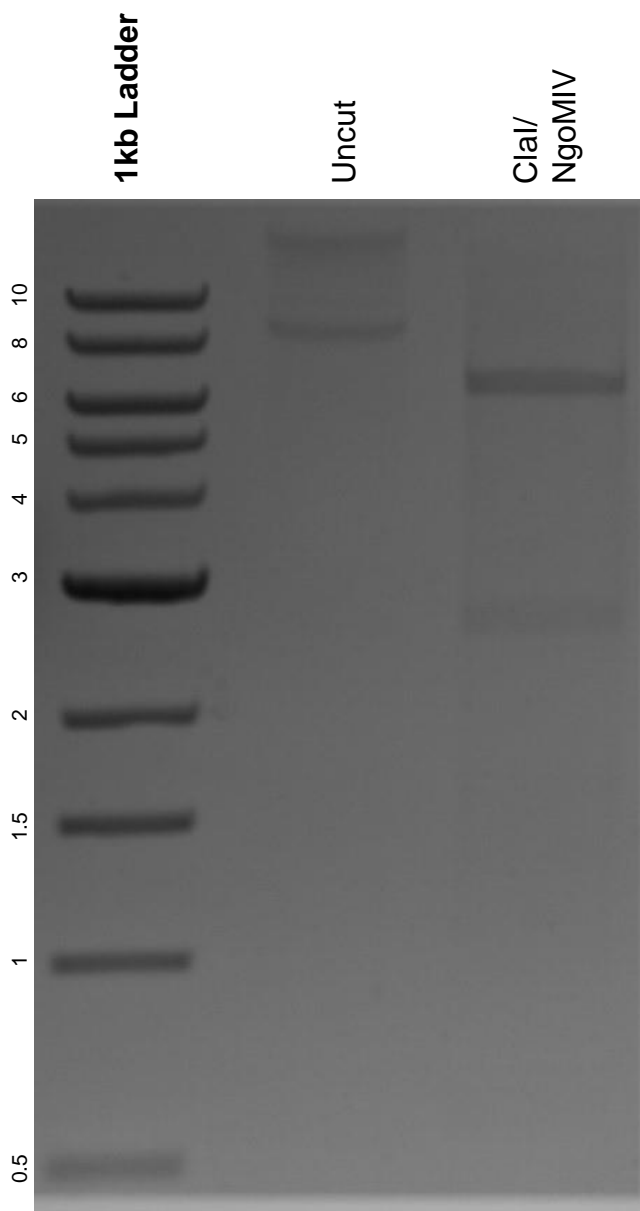


This gel depicts the NEB 1kb ladder and a digestion of the plasmid pDD291 with the following enzymes: Clal and NgoMIV.

Plasmid 137019:
pDD291



DNA digested with Clal/ NgoMIV double digest for **2 hours**.
Gel: 0.8% agarose stained with 6 uL of ethidium bromide.
Ran for 1.5 hours at 100 volts.