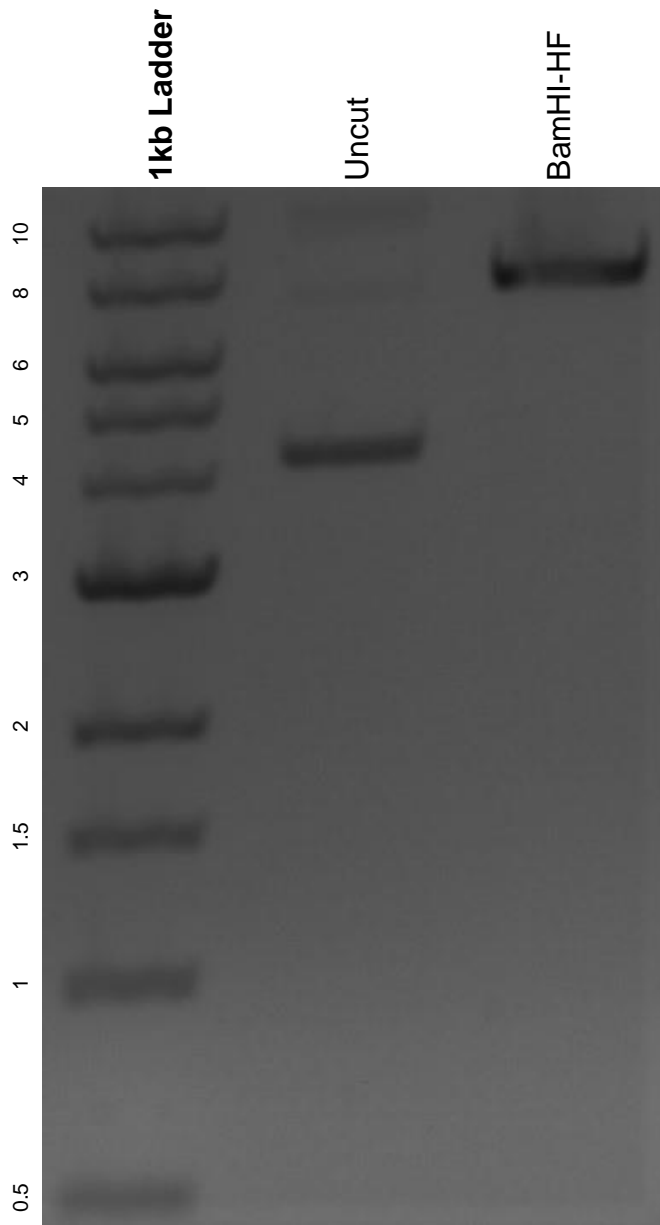


This gel depicts the NEB 1kb ladder and a digestion of the plasmid Cbh_v5 AAV-saCBE N-terminal with the following enzymes: BamHI-HF.

Plasmid 137182:
Cbh_v5 AAV-saCBE N-terminal



DNA digested with BamHI-HF single digest for **2 hours**.
Gel: 0.8% agarose stained with 6 uL of ethidium bromide.
Ran for 1.5 hours at 100 volts.