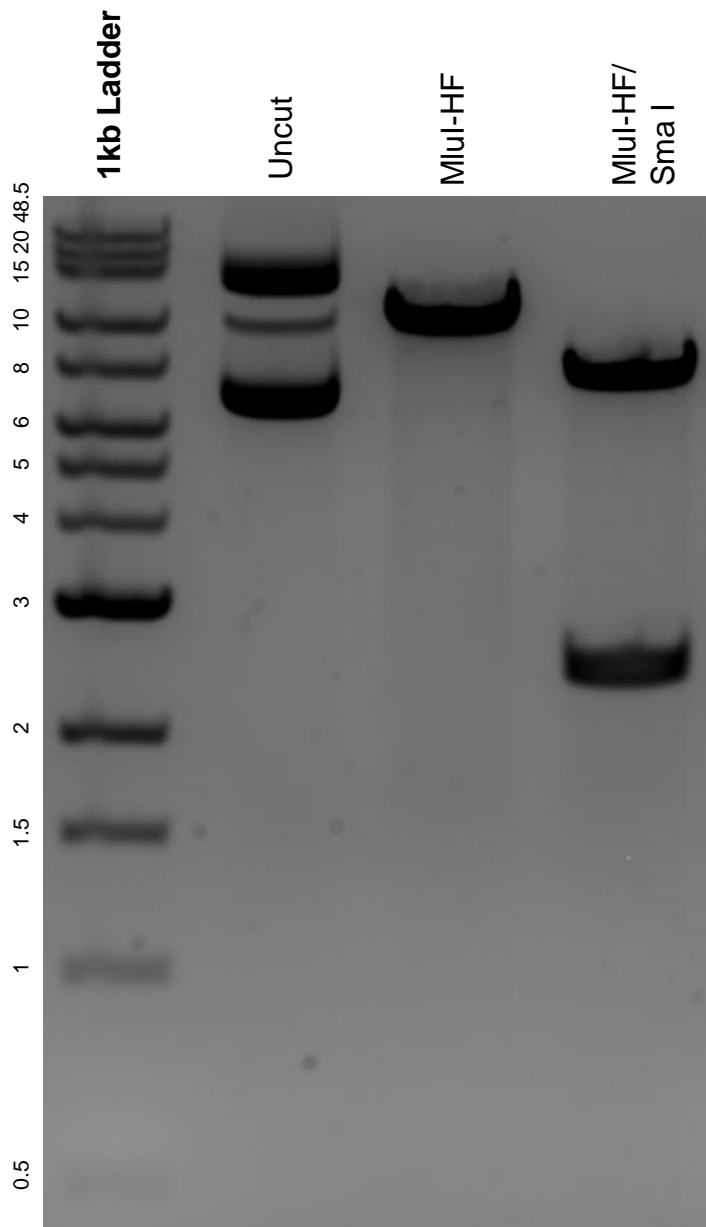


This gel depicts the NEB 1kb extend ladder and a digestion of the plasmid LentiGuide Puro-P2A-EGFP with the following enzymes: MluI-HF and Sma I.

Plasmid 137729:
LentiGuide Puro-P2A-EGFP



DNA digested with an MluI-HF single digest and an MluI-HF/Sma I double digest for **2 hours**.

Gel: 0.8% agarose stained with 5 uL of ethidium bromide.

Ran for 1.5 hours at 100 volts.