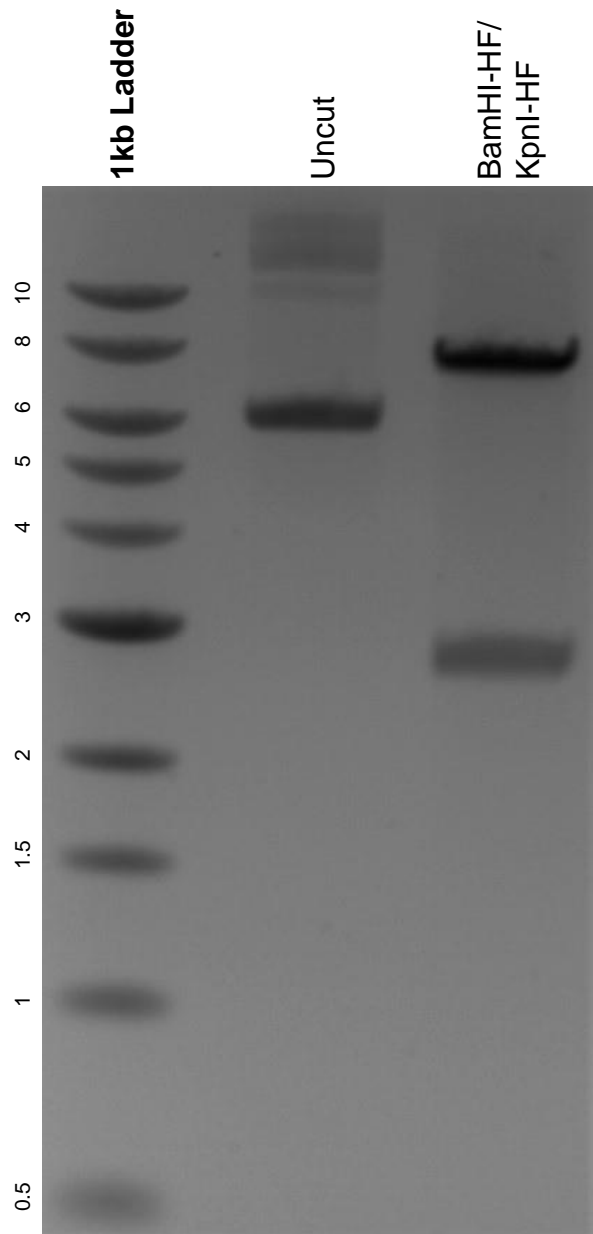


This gel depicts the NEB 1kb ladder and a digestion of the plasmid Lenti_sgRNA(MS2)_zsGreen1 with the following enzymes: BamHI-HF and KpnI-HF.

Plasmid 138463:
Lenti_sgRNA(MS2)_zsGreen1



DNA digested with BamHI-HF/ KpnI-HF double digest for **2 hours**.
Gel: 0.8% agarose stained with 6 uL of ethidium bromide.
Ran for 1.5 hours at 100 volts.