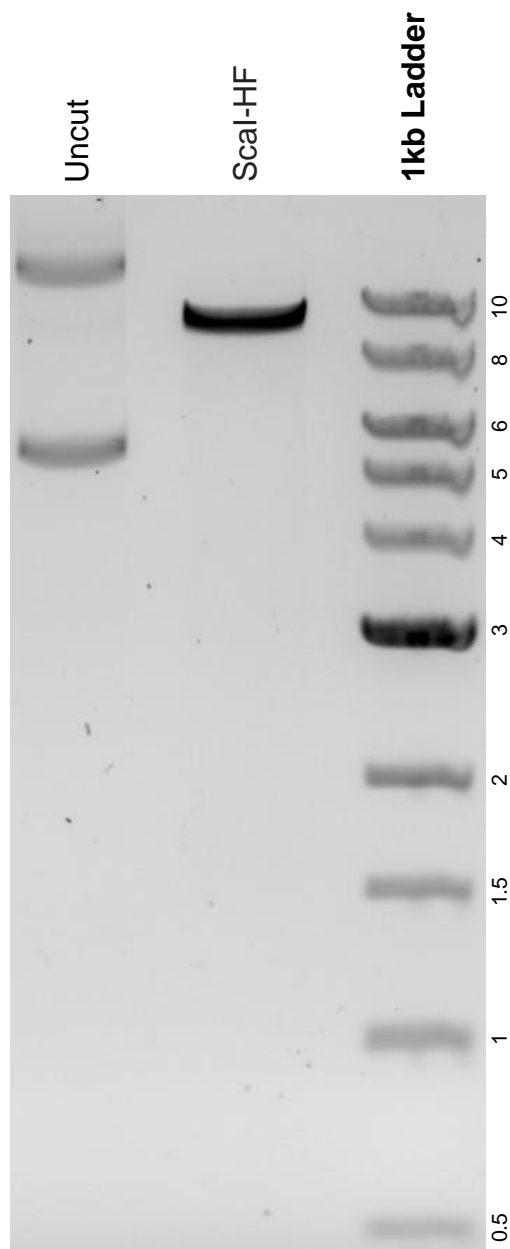


This gel depicts the NEB 1kb ladder and a digestion of the plasmid pLJC5-3XMyC-EGFP-PEX26 with the following enzyme(s): Scal-HF.

Plasmid 139059:
pLJC5-3XMyC-EGFP-PEX26



DNA digested with a Scal-HF single digest for **2 hours**.
Gel: 0.8% agarose stained with 5 uL of SYBR Safe.
Ran for 1.5 hours at 100 volts.