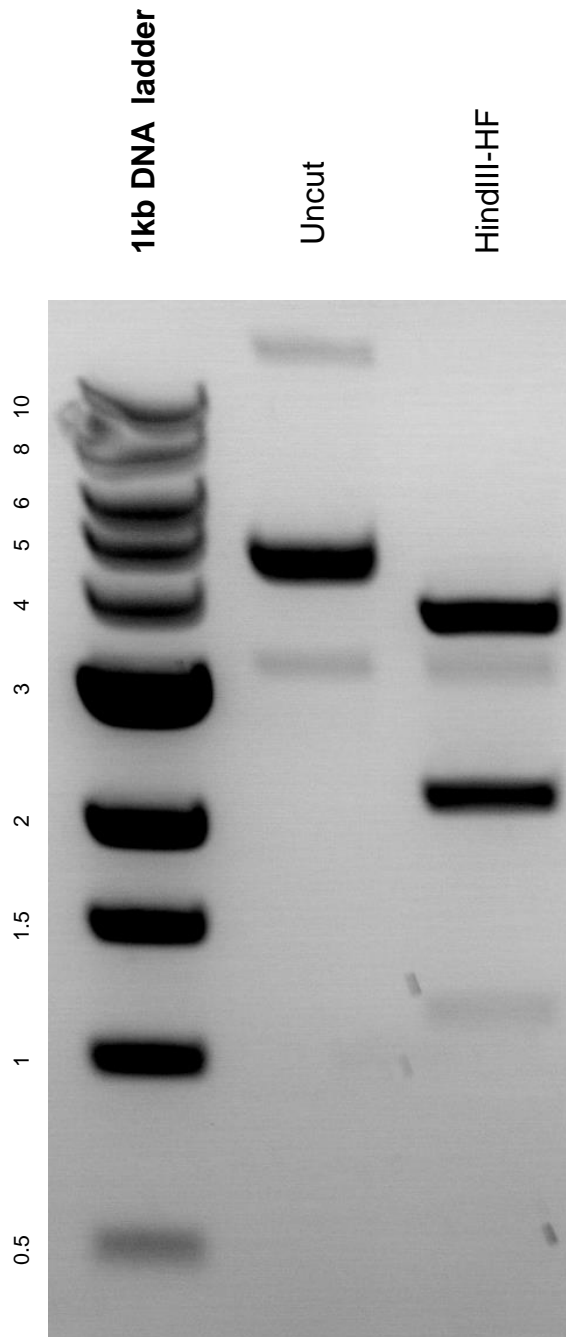


This gel depicts the NEB 1kb DNA ladder and a digestion of plasmid #14712 with the enzyme HindIII-HF

### Plasmid #: 14712



DNA digested with HindIII-HF single digest for **2.5 hours**. Gel: 0.8% agarose stained with 8 uL of ethidium bromide. Ran for 2.5 hours at 80 volts.