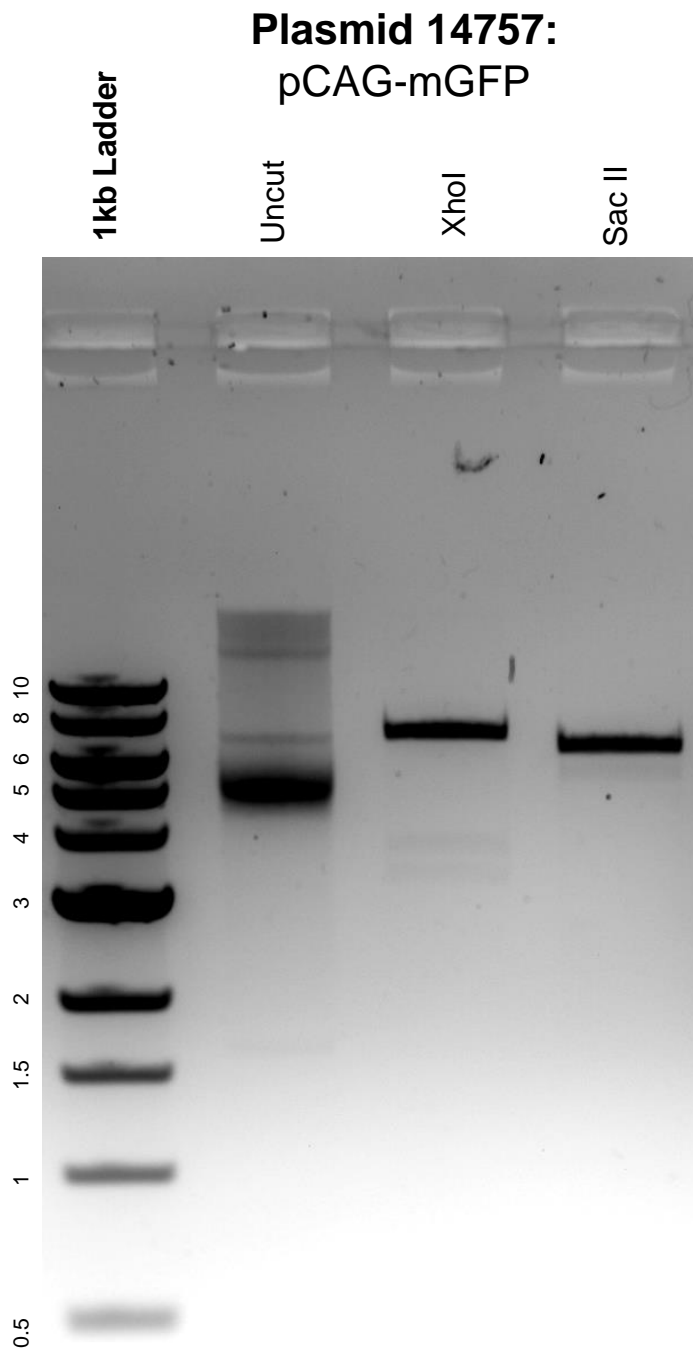


This gel depicts the NEB 1kb ladder and a digestion of the plasmid pCAG-mGFP with the following enzymes: XhoI and Sac II.



DNA digested with XhoI and Sac II single digests for **2 hours**.
Gel: 0.8% agarose stained with 5 uL of ethidium bromide.
Ran for 1.5 hours at 80 volts.